

9.8.20 CRAOBH MARINA (L Shuna)

Argyll & Bute **56°12'·80N 05°33'·54W** 🌊🌊🌊🌊🌊🌊

CHARTS AC 2169, 2326; Imray C65; OS 55

TIDES HW Loch Shuna -0100 Oban; -0615 Dover; Seil Sound Duration 0615, ML 1·4; Zone 0 (UT). For tidal figures see 9.8.19.

SHELTER Very good. Craobh (pronounced Croove) Marina (access H24) on SE shore of Loch Shuna is enclosed by N and S causeways between islets. The ent is between 2 bkwtres on the N side. In the marina, a shoal area S of the E bkwtre is marked by 9 PHM and 2 SHM buoys. A Y perch in W corner of hbr marks a spit; elsewhere ample depth. There are ⚓s in Asknish Bay 1M to the N, and in the bays E of Eilean Arsa and at Bāgh an Tigh-Stòir, S of Craobh.

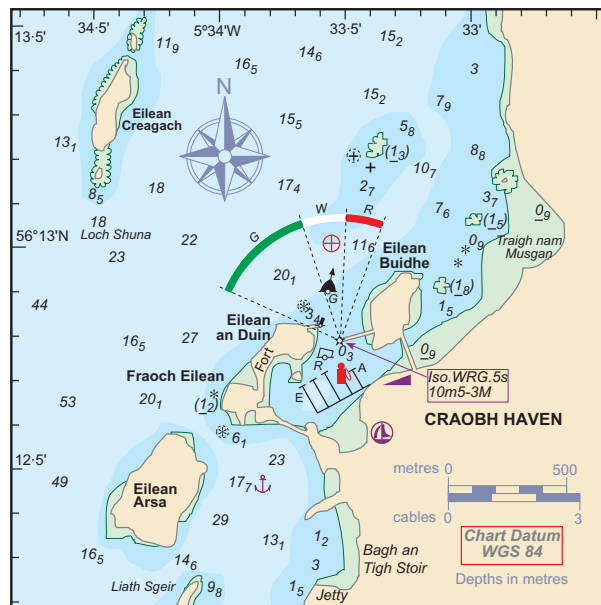
NAVIGATION WPT 56°13'·01N 05°33'·57W, 173° to ent, 2ca. Tidal streams in Loch Shuna are weak. Beware fish farm 2ca N of Shuna, lobster pots in appr's and unmarked rks (dr 1·5m) 4ca NNE of ent. An unlit SHM buoy marks a rk (1m) 150m NNW of the W bkwtre. 1M N of marina, Eich Donna, an unmarked reef (dr 1·5m), lies between Eilean Creagach and Arduaine Pt.

LIGHTS AND MARKS The W sector, 162°-183°, of Dir Lt, Iso WRG 5s 10m 5/3M, on E bkwtre hd leads 172° between the close-in rks above. Multi coloured marina buildings are conspic.

R/T VHF Ch M, 80 (summer 0830-2000; winter 0830-1800).

TELEPHONE (Dial code 01852) HM 500222, 500252; MRSC (01475) 729014; ☎ (0141) 887 9369; Marinecall 09066 526247; Police (01546) 602222; 📠 (01546) 602323.

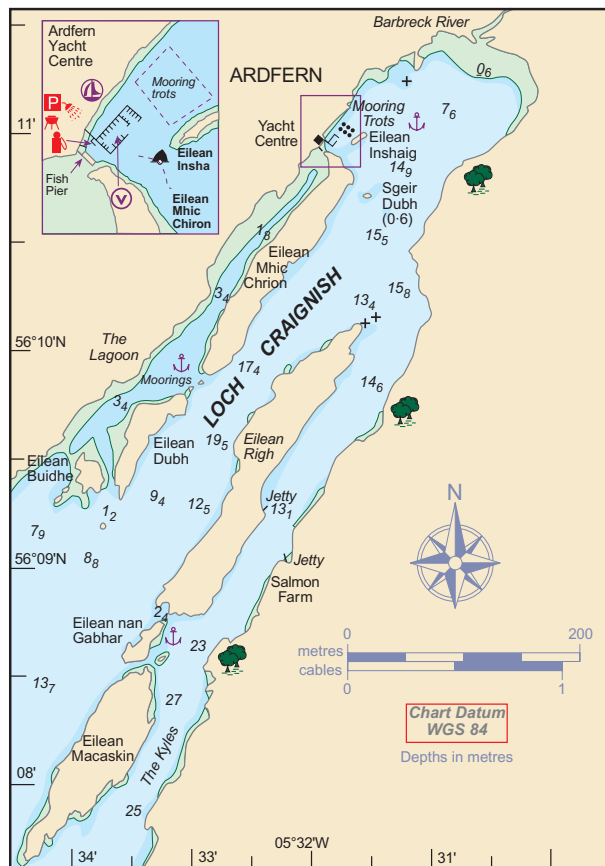
FACILITIES Craobh Marina (200+50 🚗) 📞 500222, 📠 500252, £1.94, D, SM, BY, CH, Slip, BH (15 ton), C (12 ton), Gas, Gaz, ME, EI, ⚓, R, SC, ☎, 📠, Divers. **Village** 🏠, Bar, ☎ (Fri), 📠 (Kilmelford), ⚓ (Oban by bus), 🚗 (Glasgow).



9.8.21 LOCH CRAIGNISH

Argyll and Bute **56°07'·99N 05°35'·07W** (Ardfern) 🌊🌊🌊🌊🌊🌊

CHARTS AC 2169, 2326; Imray C65, C63; OS 55



TIDES +0600 Dover; ML (Loch Beag)1·2; Duration (Seil Sound) 0615; Zone 0 (UT)

Standard Port OBAN (←)

Times		Height (metres)			
High Water	Low Water	MHWS	MHWN	MLWN	MLWS
0100	0700	0100	0800	4·0	2·9
1300	1900	1300	2000	1·8	0·7

Differences LOCH BEAG (Sound of Jura)
 -0110 -0045 -0035 -0045 -1·6 -1·2 -0·8 -0·4
 Note: HW Ardfern is approx HW Oban -0045; times/heights much affected by local winds and barometric pressure

SHELTER Good at Ardfern, 56°11'·0N 05°31'·8W, access H24; ⚓s at:
 - Eilean nan Gabhar; appr from E chan and ⚓ E of island.
 - Eilean Righ; midway up the E side of the island.
 - Eilean Dubh in the "lagoon" between the Is and mainland.
 Beware squalls in E'lies, especially on E side of loch.

NAVIGATION WPT 56°07'·59N 05°35'·37W (off chartlet) between Dorus Mòr and Liath-sgier Mhòr. Beware: strong tidal streams (up to 8kn) in Dorus Mòr; a reef extending 1ca SSW of the SE chain of islands; rk 1½ca SSW of Eilean Dubh; fish cages especially on E side of loch; a drying rk at N end of Ardfern ⚓ with a rk awash ¼ca E of it. (These 2 rks are ¼ca S of the more S'ly of little islets close to mainland). The main fairway is free from hazards, except for Sgeir Dhubh, an unmarked rk 3½ca SSE of Ardfern, with a reef extending about ¼ca all round. Ardfern is 1ca W of Eilean Inshaig.

LIGHTS AND MARKS Note: unlit SHM 25m off SW end of Eilean Inshaig.

R/T Ardfern Yacht Centre VHF Ch 80 M (office hrs).

TELEPHONE (Dial code 01852) HM (Yacht Centre) 500247/500636; MRSC (01475) 729014; Marinecall 09066 526247; ☎ (0141) 887 9369; Dr (01546) 602921; 📠 (01546) 602449.

FACILITIES Ardfern Yacht Centre (87+20 visitors); 📞 500247, 📠 500624, www.ardfernyacht.co.uk, AB £1.50, M, D, BH (20 ton), Slip, ME, EI, ⚓, ACA, C (12 ton), CH, 📠, Gas, Gaz. **Village** R, 🏠, ☎ (Fri), 📠, ⚓ (Oban), Bar, 🚗 (Glasgow).

9.8.22 SUBMARINE EXERCISE AREAS (SUBFACTS)

Areas North of Mull in which submarine activity is planned for the next 16 hrs are broadcast by CG Coordination Centres on a notified VHF Ch after an initial announcement on VHF Ch 16 at the times below. The areas are referred to by names given below, rather than by numbers indicated. For Areas 22 – 81 (South of Mull), see 9.9.19.

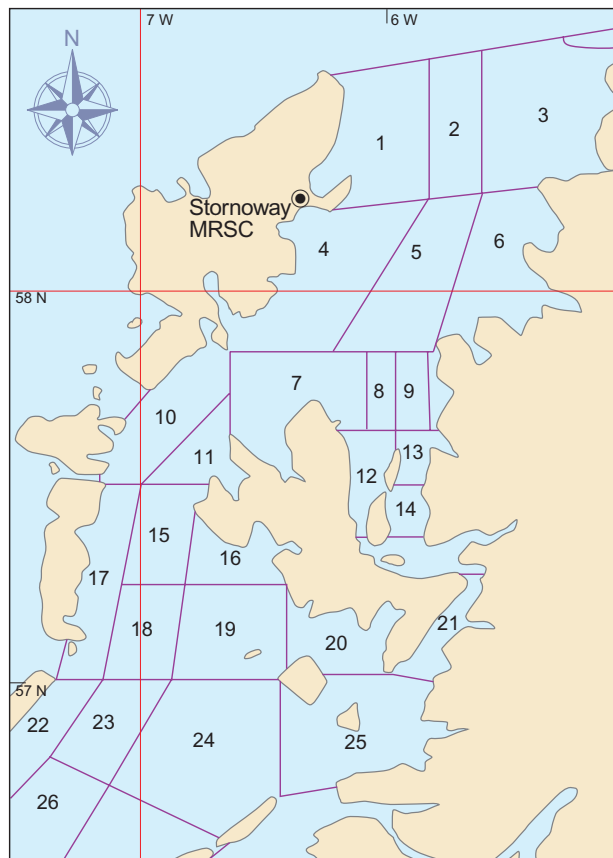
Stornoway ☎ 0110 0510 0910 1310 1710 and 2110 UT
Clyde ☎ 0020 0420 0820 1220 1620 and 2020 UT

During notified NATO exercises, Subfacts are also broadcast on MF by **Stornoway** ☎ 1743 kHz and **Clyde** ☎ 1883 kHz, at the same times as above.

General information on Subfacts is also broadcast twice daily at 0620 & 1820 UT by **Portpatrick** Navtex (O). **Stornoway** and **Clyde** CG will also supply Subfacts on request Ch 16.

A Fisherman's hotline ☎ (01436) 674321 deals with queries. FOSNNI Ops ☎ (01436) 674321 ext 3206/6778, may help. Submarines on the surface and at periscope depth always listen on Ch 16. See also 9.9.19.

- | | |
|---------------|---------------------|
| 1 Tiupan | 14 Raasay |
| 2 Minch North | 15 Neist |
| 3 Stoer | 16 Bracadale |
| 4 Shiant | 17 Ushenish |
| 5 Minch South | 18 Hebrides North |
| 6 Ewe | 19 Canna |
| 7 Trodday | 20 Rhum |
| 8 Rona West | 21 Sleat |
| 9 Rona North | 22 Barra |
| 10 Lochmaddy | 23 Hebrides Central |
| 11 Dunvegan | 24 Hawes |
| 12 Portree | 25 Eigg |
| 13 Rona South | 26 Hebrides South |



9.8.23 FERRIES ON THE WEST COAST OF SCOTLAND

The following is a brief summary of the many ferries plying between mainland and island harbours. It supplements the UK and Continental ferry services listed in 9.0.5, and may prove useful when cruise plans or crews change, often in remote places. It covers Area 8 (Stornoway to Oban) and Area 9 (Jura to the Clyde).

The major operator is Caledonian MacBrayne: Head Office, The Ferry Terminal, Gourock PA19 1QP; ☎ 08705-650000 for reservations, ☎ (08705) 650000. www.calmac.co.uk

Many routes are very short and may not be pre-bookable; seasonal routes are *asterisked.

From	To	Time	Remarks
Area 8			
Berneray	Leverburgh	1¼	Not Sun
Ullapool	Stornoway	2¾ hrs	
Uig (Skye)	Tarbert (Harris)	1¾ hrs	Not Sun
Uig	Lochmaddy (N Uist)	1¾ hrs	
Oban	Castlebay/Lochboisdale	5-7 hrs	
Sconser (Skye)	Raasay	15 mins	Not Sun
Mallaig*	Armadale (Skye)	20 mins	
Mallaig	Eigg-Muck-Rhum-Canna	Varies	Not Sun
Oban	Coll-Tiree	Varies	Not Thurs
Tobermory	Kilchoan	35 mins	
Fionnphort	Iona	5 mins	
Lochaline	Fishnish (Mull)	15 mins	
Oban	Craignure (Mull)	45 mins	
Oban	Lismore	50 mins	Not Sun
Areas 8/9			
Oban	Colonsay	2¼ hrs	Sun/W/Fri
Area 9			
Kennacraig	Port Askaig/Colonsay	Varies	Wed
Kennacraig	Port Ellen	2h 10m	
Kennacraig	Port Askaig	2 hrs	
Tayinloan	Gigha	20 mins	
Ardrossan	Brodick	55 mins	
Claonaig	Lochranza (Arran)	30 mins	
Largs	Cumbræ Slip	10 mins	
Tarbert (L Fyne)	Portavadie*	25 mins	
Colintraive	Rhubodach (Bute)	5 mins	
Wemyss Bay	Rothesay (Bute)	35 mins	
Gourock	Dunoon	20 mins	

Other Island Ferry Operators

Area	From	Operator	Telephone
Corran - V	Ardgour	Highland Council	01855 841243
Easdale - P	Seil	Area Manager	01631 562125
Firth of Lorn - P	Colonsay Uisken (Ross of Mull) Scalasaig (Colonsay) Tarbert (Jura) Port Askaig (Islay)	K & C Byrne	01951 200320
Jura - V	Port Askaig (Islay)	Serco Denholm	01496 840681
Kerrara - P	Oban	D McEachan	01631 563665
Kilgregan - P	Gourock	Clyde Marine Motoring	01475 721281
Lismore - P	Port Appin	Area Manager	01631 562125
Loch Nevis - P	Mallaig	Bruce Watt	01687 462233
Luing - P/V	Seil	Area Manager	01631 562125
Morvern	Sunart	Pre-book via	01688 302851
Mull	Drimnin	Sound of Mull	or mobile
Ardnamurchan	Tobermoray Kilchoan Gleneig	Transport	07799 608199
Skye - V		R Macleod	01599 511302
Staffa - P	Iona	D Kirkpatrick	01681 700373
Staffa - P	Mull	Gordon Grant	01681 700338
Staffa - P	Mull	Turus Mara	01688 400242

P = Passenger only

V = Cars and Passengers