

the nearby Sig stn are all conspic. For the 3 main lts, see chartlet and 9.20.4.

R/T Sig stn Ch 16, 10, day only.

TELEPHONE CROSS 02-98-89-31-31; SNSM 02-96-20-00-14; Auto 08-92-68-08-22; ☎ 02-96-20-81-87; Police 02-96-20-80-17; 📠 02-96-55-60-00; Dr 02-96-20-09-51.

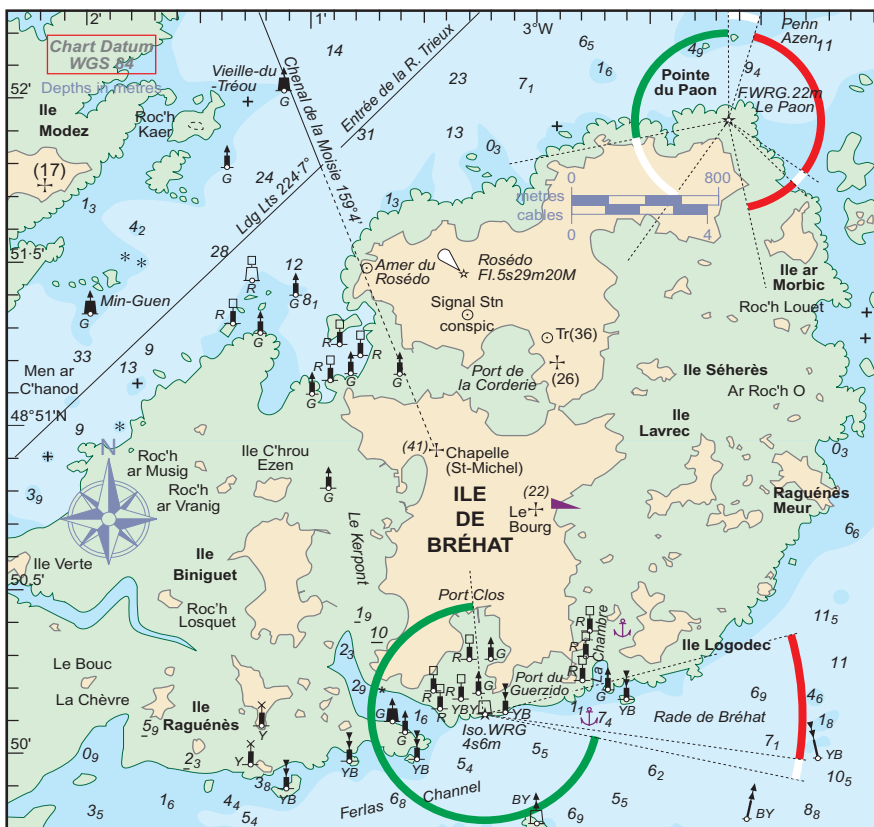
FACILITIES Port Clos the main hbr (dries) is busy with vedettes. No AB; ⚠ clear of fairway. SW of Port Clos ⚠ is prohib due to cables/pipe across the Ferlas Chan. So moor/⚠ in **Le Kerpont** W of Bréhat. **Port de la Corderie** dries; some ⚠s but get well out of strong tidal streams.

E of **Le Bourg** there are free drying private ⚠s near ⚠, but some reported unsafe due to lack of maintenance.

La Chambre: ⚠ in upper reaches just S of the ⚠ area. Slip can be floodlit by pressing button on lamp post at top of slip. **Guierzido** off the Chenal de Ferlas has good holding, partly out of the strong tides.

Hbrs (no HM), full access at HW, M, FW, P from fuel barge at Port Clos, Slip; CN de Bréhat, FW, Bar, ME.

Village 🚗, Gaz, Bar, R, 📠, 📡, 📞. Ferry to Pte de l'Arcouest, bus to Paimpol thence 🚗 to Paris, Brest, Roscoff and St Malo. ✈ Dinard, Brest, Rennes to London. Ferry: Plymouth-Roscoff. No cars on island.



OUTER APPROACHES TO LÉZARDRIEUX AND TRÉGUIER WITH PASSE DE LA GAÏNE BETWEEN

