



Corrections for January 2009
with the compliments of Adlard Coles Nautical



Nautical Almanac 2009
Channel Almanac 2009
Eastern Almanac 2009
Western Almanac 2009
Reeds PBO Small Craft Almanac 2009

Corrections to 25th December 2008 include Admiralty Notices to Mariners Week 52

EDITORIAL NOTES

1. Corrections to the above Almanacs are placed on www.reedsalmanac.co.uk at the following intervals: In early January (covering the period since going to press in June); and thereafter at the start of each month from February through to June. There is no repetition, except where an earlier correction is modified by later data.
2. We thank those who have contributed helpful suggestions, all of which are considered and, if feasible, included. Please tell the Editors as soon as possible of any corrections to the Almanac(s) thought to be necessary, particularly as a result of experience at sea.

3. Contents. NB Only areas 1-13 are covered in this update

Pages

- 2-7 Reeds Nautical Almanac
- 8 Reeds Channel Almanac
- 9-10 Reeds Eastern Almanac
- 10-11 Reeds Western Almanac
- 12 Reeds PBO Small Craft Almanac.

Adlard Coles Nautical
A&C Black Publishers Ltd
38 Soho Square
London, W1D 3HB

Tel 0207 758 0200
Fax 0207 758 0222
updates@reedsalmanac.co.uk
www.reedsalmanac.co.uk

CORRECTIONS TO 2009 REEDS NAUTICAL ALMANAC

CHAPTER 4, TIDES

63, TIDAL STREAMS, Table of Tidal Stream Atlases, penultimate line, 2006, substitute: 2005.

CHAPTER 7, SAFETY

121, NATIONAL COASTWATCH INSTITUTION (NCI), Table, Area 2, add: Lee on Solent, 023 9255 6758; Gosport, 023 9276 5194; Area 3, add: Shoreham, 07530 041733; Folkestone, amend: Folkestone (Copt Pt); Area 5, Ingoldmells Pt (Skegness), substitute: Skegness ®, 01754 610900. Area 10 (new), add: Rossall Pt (Fleetwood), 01253 681378.

CHAPTER 9, HARBOURS, COASTS AND TIDES

143, Facilities, *Ed Note: Following a request from a reader, locks which may limit access for broad-beamed yachts will be shown in future. The following locks in Areas 1-13 have a width of less than 10m:*

- 233, Island Harbour, 7.9m
- 239, Hythe Village Marina, 8m
- 249, Port Solent, 9m
- 250, Southsea Marina, 6.5m
- 252, Birdham Pool, 5m
- 252, Chichester Marina, 7m
- 263, Shoreham, 5.5m (commercial lock (16.4m) also available)
- 295, Gillingham Marina, 6m
- 302, Gallions Point Marina, 7.6m
- 302, South Dock Marina, 6.4m
- 302, Limehouse Marina, 8m
- 303, Chelsea Harbour, 5.5m
- 303, Brentford Dock, 4.8m
- 320, Shotley Marina, 7m
- 325, Mutford Lock, 5.9m
- 347, Hull Marina, 8.5m
- 351, Hartlepool Marina, 8.9m
- 353, Royal Quays Marina, 7.5m
- 373, Forth and Clyde Canal, 6m
- 464, Crinan Canal, 6m
- 497, Glasson Basin, 7.9m
- 504, Liverpool (Brunswick Lock), 8m
- 507, Dinorwic, 9.7m
- 536, Swansea Marina, 9m
- 538, Penarth Quays, 7.3m
- 544, Portishead Marina, 9m
- 546, Watchet, 7m
- 589, Kilrush, 9m

AREAS 2-13, VERTICAL CLEARANCES. Most overhead clearances are now measured from HAT. Where clearances are shown to be measured from MHWS the following amendments should be made in the text and/or chartlets:

- 217, Poole, Poole Bridge (closed), 1.8m
- 238, Southampton, Itchen Bridge, 23m
- 239, Southampton, Itchen Bridge, 23m
- 262, Littlehampton, footbridge, 3m
- 292, The Swale, Kingsferry Bridge, 28m
- 294, River Medway, Rochester Bridge, 5.4m
- 294, River Medway (inset chartlet N to S):
Medway, Medway Bridge, 16.2m
Whornes, power lines, 34m
Clinkham, power lines, 43m
Wouldham, power lines, 25m
Hawkwood, power lines, 27m
Lower Cut, power lines, 27m
New Hythe, footbridge, 10.7m
Ditton, bridge, 2.3m
Aylesford, bridge, 2.7m
Allington, bridge, 8.9m
- 302, St Katharine Haven, Tower Bridge, 8m
- 347, River Humber, Humber Bridge, 29m
- 348, River Ouse, Ousefleet power lines, 42m
- 348, River Trent, Hillside power lines (x2), 35m/39m
- 379, River Tay, Tay River Bridge, 21m
- 379, River Tay, Tay Railway Bridge, 21m
- 380, Montrose, New Bridge, 2.4m
- 445, Corpach, Ballachulish Bridge, 16m
- 508, The Swellies, Menai Bridge, 29m
- 508, The Swellies, Britannia Bridge, 26m
- 529, Neyland, road bridge, 36m
- 544, Bristol (bottom chartlet W to E):

- Avon Bridge, 3.4m
- Railway Bridge, 0.3m
- Plimsoll Swing Bridge, 4.3m
- Swing Bridge (Lock), 1m
- Gaol Ferry, 5.5m
- St Augustine's (x2), 1.8m/0.7m
- Prince St Swing Bridge, 0.7m
- Redcliffe Bascule, 2.1m
- Bedminster Bridge, 1.3m
- 571, Waterford, Barrow Bridge, 7.1m
- 578, Kinsale, Kinsale Bridge, 4.7m
- 613, River Bann, Coleraine Bridge, 4.9m

AREA 1, SW ENGLAND

155, TEIGNMOUTH, line 2, Spratt Sand, delete entry; substitute: Bar ▲ Fl G 2s; 50°32'44N 03°29'25W.

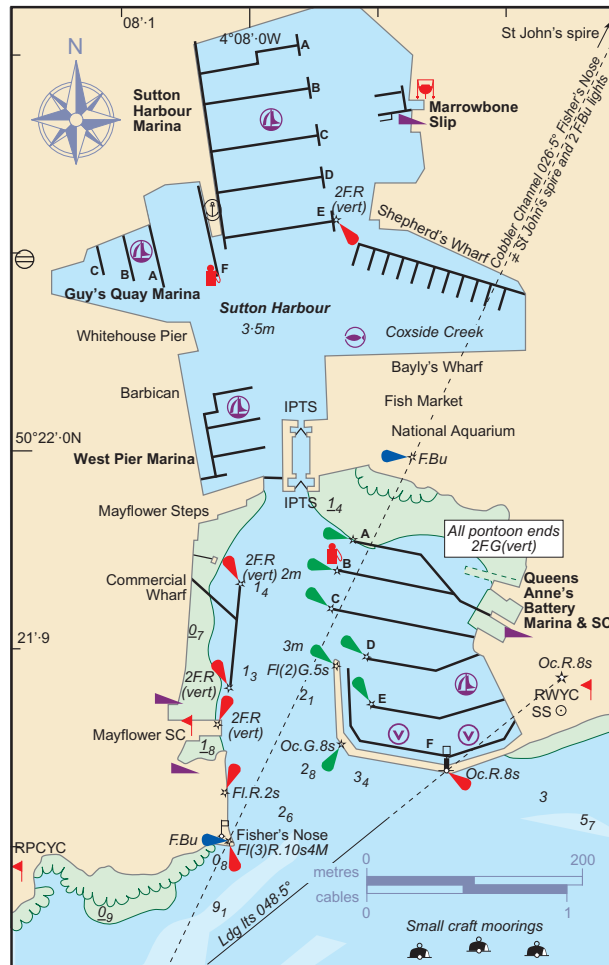
155, RIVER EXE to SIDMOUTH and AXMOUTH, delete lines 1 to 5; substitute:
Exe q Mo(A) 10s; 50°35'92N 03°23'75W.
No. 1 ▲ 50°36'07N 03°23'78W.
No. 2 ▲ 50°36'03N 03°23'91W.
Line 9, Straight Point, delete entry.

173, PLYMOUTH, LH column, lower chartlet, [substitute chartlet below](#) showing new commercial pontoon and associated lights.
RH column, Sutton Hbr, lines 1/2, amend: 204702; delete: 07785 986921, 204693.

178, RIVER YEALM, Lights and Marks, lines 5/6, delete: but not before ... S shore; substitute: the second buoy (not before) ...

179, SALCOMBE, Shelter, line 4, delete: Middle Ground (2.4m); Navigation, RH column, line 4, after ... limit 8kn, add: but 6kn between Marine Hotel/racing start line and the Saltstone (approx 50°15'2N 03°45'5W).

Chartlet and inset, delete ↓ symbol on Middle Ground (S of Snapes Point).



179, KINGSBRIDGE, last paragraph, lines 1/2, amend: **Ⓢ** AB on pontoon on W side of basin or on the wall N of the pontoon marked ...

180, PASSAGE INFORMATION, penultimate paragraph, line 3, delete: (AC 26).

185, BRIXHAM, Charts, delete: 26.

185, PAIGNTON, line 2, delete: 26.

186, TORQUAY, Charts, delete: 26.

186, TEIGNMOUTH, Charts, delete: 26.

Navigation, lines 3/4, delete: AC 26 ... such shifts.

Ed Note: AC 26 was due to be withdrawn, without replacement, in Dec 08.

187, TEIGNMOUTH, Chartlet, insert SHM buoy, **▲ Fl.G.2s**, in position 50°32'·44N 03°29'·25W (E of The Bar).

Move PHM buoy, **Fl.R.2s**, NE of East Pole Sand, approx 100m S to 50°32'·35N 03°29'·36W.

187, PASSAGE INFORMATION (LYME BAY etc), line 5, after Straight Pt, delete: (lt).

187, RIVER EXE, Navigation, delete in toto, substitute:

WPT 50°35'·92N 03°23'·75W, Exe SWM buoy, 335°/6ca to No 7 SHM buoy.

Up to date AC 2290 is essential. Leave WPT at approx LW+2 (or when there is sufficient rise of the tide) when hazards can be seen and some shelter obtained, or at HW-1 or HW-2 to reach Exmouth or Topham, respectively, at slack water.

The new (2008) approach channel, with a least depth of 0.4m, is well marked with PHM/SHM buoys, some of which are lit. Night entry is not advised. After No 10 PHM buoy do not cut the corner round Warren Point; turn to the SW after passing No 12 PHM buoy. Beware of the flood stream setting towards Exmouth and the moorings.

The estuary bed is sand/mud, free of rocks. Follow the curve of the channel rather than straight lines between the buoys; some bends are marked on the outside only. The estuary is an international conservation area.

Lights and Marks, line 4, delete: do not use ... SHM buoy.

Telephone, add: HM (01392) 274306.

188, RIVER EXE, Chartlet, **substitute chartlet inset below** showing new buoyage in approaches to the river.

199, WEYMOUTH, Navigation, penultimate line, N Quay, amend: Commercial Pier.

Chartlet, insert: *Commercial Pier* between *Custom Hse Quay* and the *2FG(vert)* light (approx 50°36'·5N 02°26'·8N).

200, LULWORTH RANGES, Information, firing *will* take place during the following weekends in 2009:

24/25 January

14/15 March

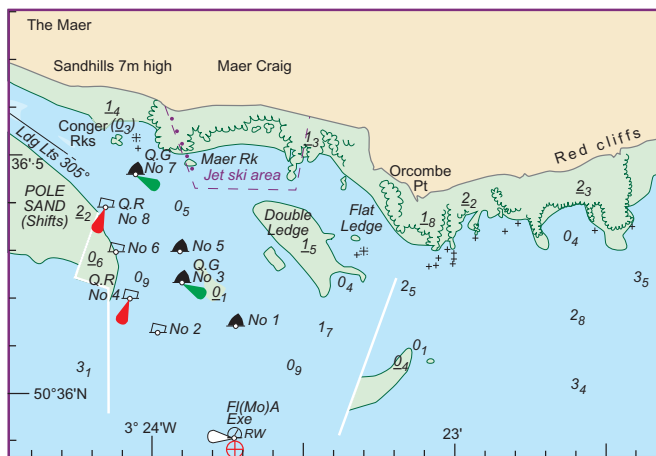
4/5 April

18/19 July

3/4 October

14/15 November

Firing *will not* take place on all other weekends and during the following periods:



January 2009

20 December 2008 - 4 January 2009

10 - 19 April

2 - 4 May

23 - 31 May

25 July - 31 August

19 December - 3 January 2010

AREA 2, CENTRAL S ENGLAND

208, YARMOUTH, line 2, Yarmouth Road, delete entry; substitute: Poole Belle **▲ Fl Y**; 50°42'·51N 01°30'·08W.

209, CALSHOT REACH, last line, Bald Head, amend: **▲ Fl G 2-5s** (position unchanged).

209, SOLENT MARKS, RH column, line 10, No Man's Land Ft, delete light. *Ed Note: The fort is presently unlit; a PHM buoy, Iso.R.2s, has been established approx 0.5ca to the NE.*

210, SOUTH EAST COAST of the ISLE OF WIGHT, line 5, West Princessa, **▲ (ECM)**, amend **▲ (WCM)**.

213, POOLE HARBOUR, Lights and Marks, Poole Bridge, delete last two paras, substitute:

Poole Bridge opens daily, only if vessels are waiting, at: 0530, 0630, 0730, 0930, 1030, 1230, 1430, 1630, 1730 (Sat, Sun and Bank Holidays only), 1830, 1930, 2130, 2345.

Pleasure craft may pass when bridge is opened for commercial traffic. Monitor Ch 14 for further information.

215 and 217, POOLE HARBOUR, Chartlets, amend text boxes containing bridge opening times as at **213** above.

226, YARMOUTH, Chartlet, delete Y SPM buoy, **Fl.Y.4s** (approx 1ca WNW of pierhead); insert Y SPM buoy, **▲ Fl Y**, *Poole Belle*, 50°42'·51N 01°30'·08W (0.6ca W of pierhead).

240, SOUTHAMPTON, Lights and Marks, lines 13/14 (4th para), delete: Ent to Ocean Village ... on E bank. *Ed Note: The sheds are being demolished (Nov 08).*

250, LANGSTONE HARBOUR, Shelter, line 3, delete: ... 2 more on E side ...

Chartlet (LH column), **▲** at 50°48'·42N 01°01'·83W (SW of Sword Sands), amend: **▲ Fl(2)R 5s**. Delete No.2 **▲** (SW of Fairway Bn, close to Rowey Wk).

Chartlet (RH column), delete **▲** on E side of entrance.

AREA 3, SE ENGLAND

260, OFFSHORE MARKS, RH Col, line 4, South Varne, delete: *Whis*;

line 10, CS 4, delete: *Whis*;

line 11, CS 5, lat/long, amend: 51°27'·35N 01°52'·76E.

262, LITTLEHAMPTON, Chartlet, insert **Q.R** bcn on W side of channel at 50°48'·25N 00°32'·62W (NE of David Hillyard BY).

Shelter, line 2, delete: (0.6m); substitute: (0.8m).

Navigation, line 12, ... subtract 0.6m ... ; substitute: ... subtract 0.8m ...

Telephone, line 2, delete: Duty Officer mob 07775 743078.

277, DOVER STRAIT, CA4 buoy (WNW of Calais), rename: Calais Approche.

AREA 4, E ENGLAND

284, THE SWALE, lines 1-12, delete in toto; substitute:

Whitstable Street **▲ Fl R 2s**; 51°24'·00N 01°01'·54E.

Columbine **▲ Fl G 2s**; 51°24'·26N 01°01'·34E.

Columbine Spit **▲ Fl (3) G 10s**; 51°23'·86N 01°00'·03E.

Ham Gat **▲ Q G**; 51°23'·08N 00°58'·32E.

Pollard Spit **▲ Q R**; 51°22'·98N 00°58'·57E.

Sand End **▲ Fl G 5s**; 51°21'·43N 00°55'·90E.

Receptive Point **▲ Fl G 10s**; 51°20'·86N 00°54'·41E.

Ed Note: The synchronised LED trial has now been completed; the buoys in the approaches to the Swale are now as above and are not synchronised.

284, PRINCES CHANNEL, lines 4-16 (Outer Princes to E Redsand), delete in toto; substitute:

Princes Outer **▲ VQ (6) + L Fl 10s**; 51°28'·89N 01°20'·43E.

Princes North **▲ Q G**; 51°29'·25N 01°18'·35E.

Princes South **▲ Q R**; 51°28'·74N 01°18'·26E.

Princes No.1 **▲ Fl (4) G 15s**; 51°29'·23N 01°16'·02E.

Princes No.2 **▲ Fl (2) R 5s**; 51°28'·81N 01°13'·08E.

Princes No.3 **▲ Fl (2) G 5s**; 51°29'·33N 01°13'·10E.

Princes No.4 **▲ Fl (3) R 10s**; 51°28'·83N 01°09'·90E.

Princes No.5 **▲ Fl (3) G 10s**; 51°29'·39N 01°10'·00E.

Princes Mid Δ Fl Y 5s; 51°29'·19N 01°09'·00E.
Shivering Sand Twr N Δ Q; 51°30'·01N 01°04'·76E.
Shivering Sand Twr S Δ Q (6) + L Fl 15s; *Bell*; 51°29'·75N
01°04'·83E.
Princes No.8 Δ Fl (2) R 5s; 51°29'·15N 01°03'·87E.
Princes Inner Δ Fl Y 2·5s; 51°29'·59N 01°03'·47E.

286, HARWICH CHANNEL, line 1, Sunk Inner, amend: \Rightarrow Iso 3s 11m
12M, *Racon T*; *Horn 30s* (position unchanged).

290, THAMES ESTUARY, substitute chartlet on page 5 showing
buoy changes at Sunk Inner and Princes Channel, and a windfarm
(under construction) on Gunfleet Sand.

*Ed Note: A new Thames Estuary southern access route has been
established in the Princes Channel, minimum depth 7·9m. See
latest edition (Oct 08) of AC 1606; other charts will be amended
in due course.*

292, THE SWALE, Chartlet, delete light, 2.F(vert), at Ridham Dock
(SE of Kingsferry Bridge);
amend dir lt (2.FG(vert)) below Kingsferry Bridge: *Iso.WRG.6s*
(*Traffic SS*);

Ham Gat SHM buoy (E entrance to The Swale), amend: Δ Q.G;
Pollard Spit PHM buoy, amend: Q.R;
delete South Oaze PHM buoy.

Navigation, lines 2/3, delete: The buoys as far ... LED lights.

295, RIVER MEDWAY, Navigation, tinted box, delete: (MHWS);
substitute: (HAT).

299, THAMES TIDAL BARRIER, Control and Communications, lines
5-10, amend:

Inbound yachts and small craft should call *London VTS* to obtain
clearance to proceed through the Barrier when passing Margaret
Ness (51°30'·54N 00°05'·50E).

Outbound yachts and small craft should call *London VTS* to obtain
clearance to proceed through the Barrier when passing Blackwall
Point (51°30'·30N 00°00'·18E).

Testing, the first maintenance closures of 2009 will be:

Tue 13 Jan 0825-1055

Wed 11 Feb 0815-1045

Thu 12 Mar 0755-1025

Thu 9 Apr 0745-1015

Note: Times may vary by up to one hour.

320, RIVERS STOUR AND ORWELL, Main chartlet, delete G Δ at
S side of entrance to Felixstowe Dock; delete 2.F.G light just S of
Felixstowe Dock.

323, RIVER ORE/ALDE, Telephone, lines 1/2, delete: HM Orford
450481.

325, LOWESTOFT, Chartlet, delete ∇ west of Mutford Lock.
Navigation, Bridge to Inner Hbr, lines 2-4, amend: ... every day at
0300, 0500, 0700, 0945, 1115, 1430, 1600, 1800 (w/e & BH only),
1900, 2100 and 2400. Small craft

Facilities, line 2, delete: C (2 ton).

Entry to the Broads, lines 2-6, substitute: ... Oulton Broad from
Lake Lothing is via two bridges and Mutford Lock (width 5·9m).
The lock is available 0800-1200 and 1300-1730 daily; 0800-1200
and 1300-1930 at weekends/Bank Holidays; 0900-1200 only 1
Nov to 31 Mar. Charge is £10/day. Booking 24 hours in advance is
recommended, Δ 01502 531778 or Ch 14.

AREA 5, NE ENGLAND

338, BLAKENEY, Navigation, tinted box, first bullet point, delete:
PHM; substitute: IDM

340, KING'S LYNN, RH chartlet, Lynn Cut, delete *E Stones Fl.R2·5s*
and associated beacon.

347, RIVER HUMBER, lower chartlet, Humber Sea Terminal (approx
53°40'N 00°14'W), S end, insert RWG light symbol.

348, GOOLE, Chartlet inset, delete light, *F.RG* and associated
sectors, on Bond Island.

352, SEAHAM, *Ed Note: North Dock is undergoing major re-
development with a new 77-berth marina due to open late 2009.
South Dock is not normally available to yachts.*

360, BERWICK-UPON-TWEED, Chartlet, delete the gas holders at
Spittal; delete the chimney (conspic) S of Tweedmouth.

AREA 6, SE SCOTLAND

366, LEITH and GRANTON, line 2, East Bkwtr Hd, delete: *Horn*
(3) 30s.

366, NORTH CHANNEL and MIDDLE BANK, RH column, last line,
No. 15, lat/long, amend: 56°01'·39N 03°18'·95W.

366, GRANGEMOUTH, line 1, Grangemouth App No. 1, Fl(3) R 20s,
amend: Fl(3) 10s;
line 2, Hen and Chickens, Fl(3) G 20s, amend: Fl(3) G 10s;
last line, Dock Entrance, delete entry.

AREA 7, NE SCOTLAND

392, ORKNEY ISLANDS, line 3, Cantick Hd, amend range: 13M.

393, EDAY and EGILSAY, line 1, Calf Sound, amend: Fl (3) WRG
10s 6m W8M, R6M, G6M; W twr; vis: shore-R-215°-W-222°-G-
301°-W-305°; 59°14'·21N 02°45'·82W.

394, MAINLAND, WEST, last entry, North Havra, amend: Fl (3) WRG
(other details unchanged).

397, BUCKIE, Navigation, line 1, substitute: WPT 57°41'·3N
02°59'·0W, 125°/0°8M to ent. The recommended track from the
WPT is 128° until the 2.F.R (vert) and Oc.R. 10s on the N breakwater
are in line (096°), thence to the hbr ent. Beware ...

Chartlet, substitute chartlet on page 6 showing new recommended
track and transit.

400, INVERNESS, Navigation, line 4, for Beware marine farms ... ,
substitute: Beware bird rafts

Last line, for Carnare Pt, substitute: Carnarc Pt.

R/T, Insert: *Inverness Marina* Ch 12.

Facilities, lines 1/2, Δ , amend: 220501 or 07526 446348.

400, CALEDONIAN CANAL, *Ed Note: The Caledonian Canal will be
closed to through traffic from 24 Dec 08 to 22 Mar 09 for major
engineering works. Contact the Canal Office, Δ 01463 725500,
for further details.*

401, INVERNESS, Chartlet, substitute chartlet on page 6 showing
minor amendments and correcting a printing error which removed
some water from the Caledonian Canal.

402, CROMARTY HARBOUR, lines 8-11, substitute:

... D, Δ , ∇ available in harbour. **Cromarty Boat Club**, www.cromartyboatclub.org, 2 Δ in Q: 5m to 1·5m; showers, ∇ , Δ (owned
by Boat Club; key held at Royal Hotel). Δ , Δ . Local ferry to
Nigg.

AREA 8, NW SCOTLAND

425, OUTER HEBRIDES - WEST SIDE, LH column, line 4, after last
entry (Haskeir) insert:

Monach Isles \star Fl (2) 15s 47m 18M; R brick twr; 57°31'·55N
07°41'·68W.

425, TIREE, COLL and ARINAGOUR, line 1, Loch Eatharna, lat/long,
amend: 56°36'·65N 06°30'·90W.

427, STORNOWAY, Lights and Marks, lines 4/5, amend: ... tanks,
all conspic then Creed Estuary, Iso WRG 10s, across the harbour;
and finally

431, SOUND OF HARRIS and LOCH RODEL, delete: AC 2642 (for
both places); substitute: AC 2802.

Tinted box, delete in toto (AC 2802 is North-up).

432, ACAIRSEID MHOR, RH column, line 1, reports indicate there
are now only 2 Δ s, at least one of which is submerged at HW Sp.

432, CASTLEBAY, lines 3/4, about 20 Δ s have been laid to the W
of the pier; they may be encroaching on the recommended
anchorage NW of Kiessimul Castle.

432, MONACH ISLANDS, line 6, amend: ... is a conspic red brick lt
ho, Fl (2) 15s. Δ s at: E of lt ho; Croic

440, LOCH TORRIDON, line 1, delete: AC 228; substitute: AC
2210.

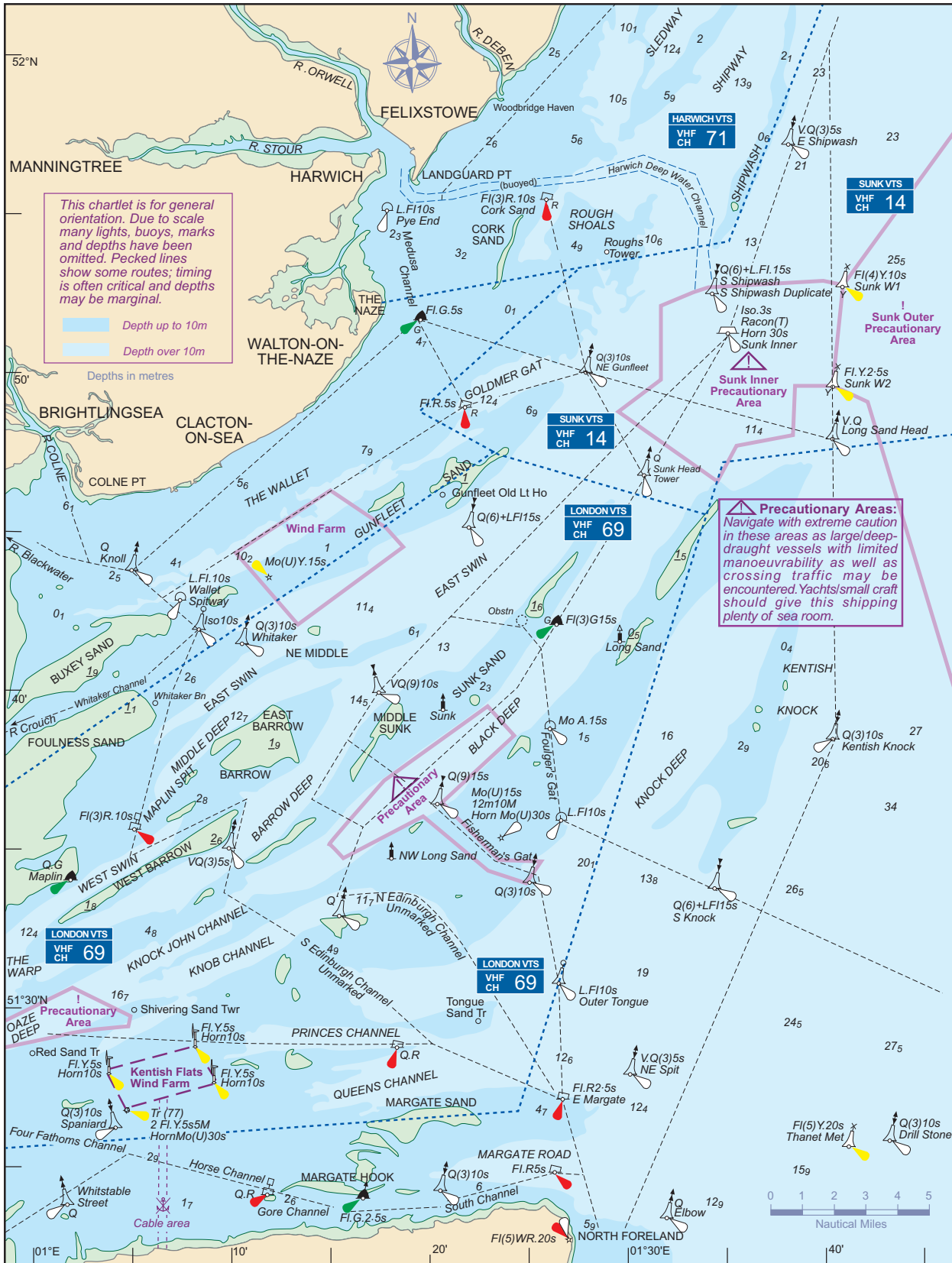
Line 5, amend: ... with good Δ and 2 Δ s (up to 10 tons) between
the ls and village. 1M to the

444, LOCH ALINE, Navigation, line 2, delete: (not easily seen);
substitute: (bright orange).

Chartlet: Leading lights 356°, add: *Or* by both bns; amend elevation
of front bn: 2m.

446, CALEDONIAN CANAL, *Ed Note: The Caledonian Canal will be
closed to through traffic from 24 Dec 08 to 22 Mar 09 for major
engineering works. Contact the Canal Office, Δ 01463 725500,
for further details.*

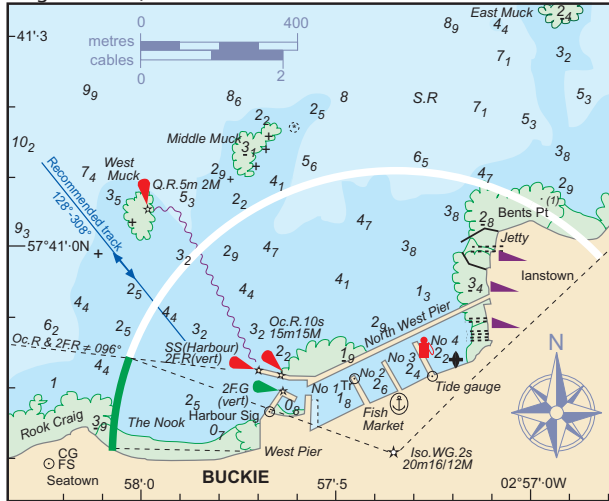
451, OBAN, Chartlet, move light, (vert) 2.F.G, on Oban pier to just
W of the Cupola; amend to: 2.F.G(vert).



AREA 9, SW SCOTLAND

460, SOUND OF ISLAY, lines 1/2, Rubha'a'Mhàil, amend: Fl (3) 15s 45m 19M; W twr.

460, PORT ELLEN and LOCH INDAAL, line 3, Rubh'an Dùin, amend ranges: W11M, R8M.



464, CRINAN CANAL, Ed Note: The Crinan Canal will be closed for essential maintenance work from 24 Dec 08 to 16 Mar 09. During this period Crinan Basin and the Dunardry locks will be drained.

465, TARBERT, LOCH FYNE, Portavadie Marina, last line, add: Entrance marked by Fl R 2s and Fl (2) G 8s lights.

471, ROTHESAY, Chartlet, Albert Pier light, amend: F.G.W (Hbr open) or 3.F.R (vert) (Hbr closed); Delete 2.F.G (vert) on E end of Front Pier; Front Pier, rename: Main Pier; On W end of same pier, insert: West Pier.

481, TROON, Lights and Marks, lines 1/2, delete: Sheds (35m) ... at night.

483, KIRKCUDBRIGHT, Lights and Marks, last line, delete: marina; substitute: pontoon.

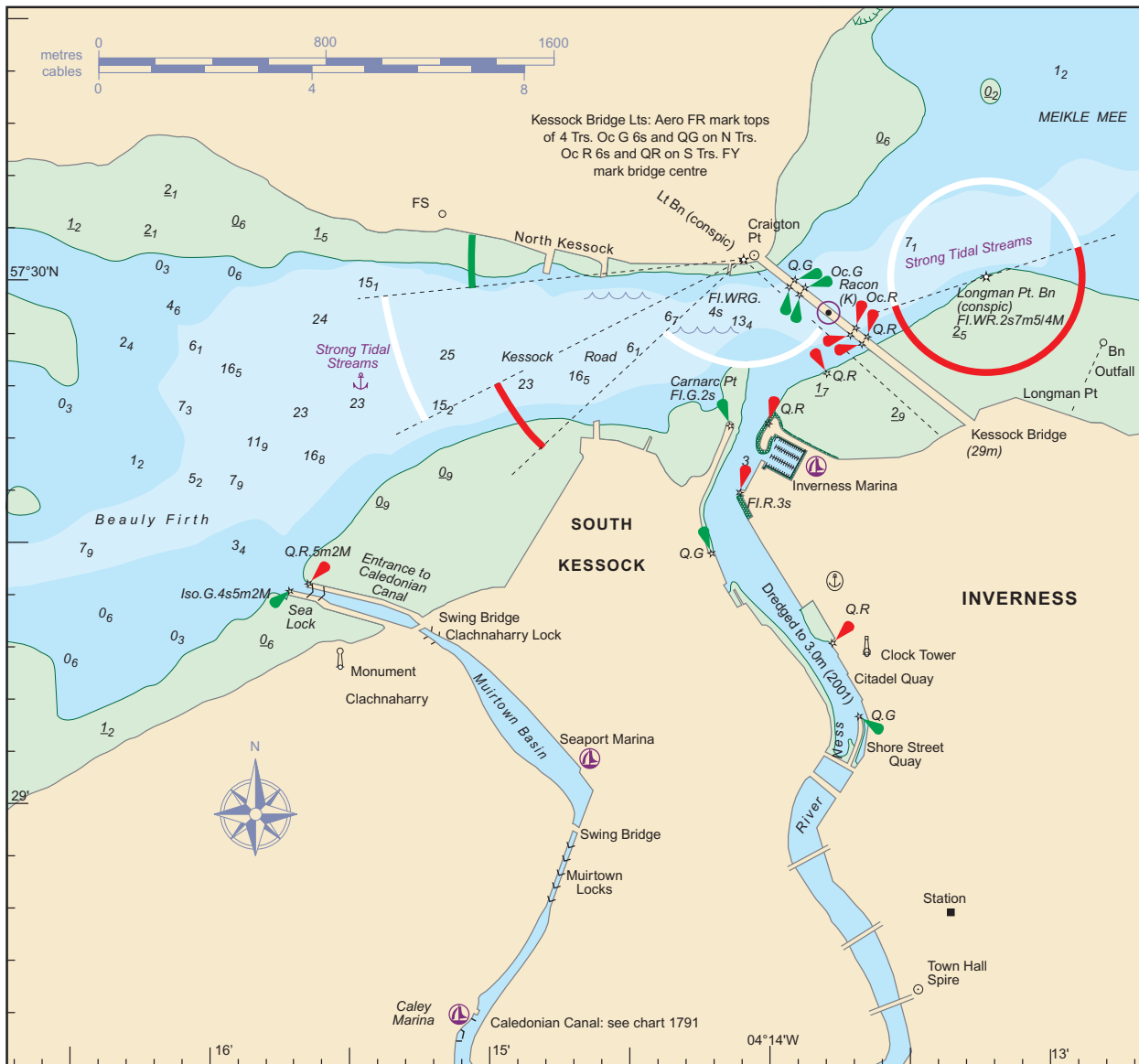
Chartlet, delete: Q.R at N end of chartlet; insert:
 Q.R at 54°50'24N 04°03'84W (just S of Q.R Bn above);
 Q.R at 54°49'88N 04°04'07W (off Gibbhill Pt);
 L.F.I.G. 6s at 54°50'35N 04°03'58W (SW end of St Marys Isle).

AREA 10, NW ENGLAND

490, RIVER MERSEY and LIVERPOOL, line 1, Bar, amend: Bar Fl. 5s 12M (other details unchanged).

491, PASSAGE INFORMATION, RH column, last paragraph, for (2007), substitute: (2008).

Last two lines, amend: ... but no shelter except, possibly, in Ramsey Bay, IoM.



492, WORKINGTON, Light and Marks, line 5, for Y bands, substitute: R bands.

Telephone, delete: CG 2238.

Facilities, Vanguard SC ☒, amend: 01228 674238.

495, PEEL, Lights and Marks, line 5, 204°, amend: 207°.

498, FLEETWOOD, LH chartlet, delete 2F.G(vert) light at 53°55'·8N 03°00'·9W.

RH chartlet, amend light at 53°55'·75N 03°00'·58W (Fl.G.3·5s) to Iso.G.2s.

Delete Victoria Pier (N side of Fleetwood).

Insert light, 2FR(vert) 3m 2M, at W end of submerged/ruined section of Ferry Pier at Knott End-on-Sea.

503, LIVERPOOL, Lights and Marks, line 2, delete: Bar Lt buoy; substitute: Bar Lt float.

505, CONWY AND DEGANWY, Navigation, penultimate line, amend: ... and five unlit pontoons upriver between Bodlondeb Pt and the road/rail bridge.

AREA 11, S WALES AND BRISTOL CHANNEL

520, MILFORD HAVEN, RH column, penultimate line, ODAS, amend: Fl(5) Y 20s; 51°36'·70N 05°08'·70W.

521, RIVER AVON, CUMBERLAND BASIN etc, lines 1/2, S Pier Hd, amend: Oc RG 30s 9m 10M and FBu 4m 1M (position unchanged); add: Bell(1) 10s.

547, ILFRACOMBE, Chartlet, delete ☒ on S side of harbour; amend 'V' numbers on N side: 14-17; amend 'V' numbers on S side: 12-14.

AREA 12, S IRELAND

556, HOWTH, line 4, Baily, add: Fog Det Lt VQ.

Lines 7/8, Ed Note: N Burford and S Burford buoys to be discontinued in Jan 09.

556, DUN LAOGHAIRE, line 1, E Bkwtr Hd, amend: Fl (2) R 8s; add: Fog Det Lt VQ. Ed Note: E and W Breakwater lights to be synchronised from Jan 09.

556, OFFSHORE MARKS, line 2, Kish Bank, add: Fog Det Lt VQ.

556, ARKLOW to WEXFORD, line 14, Ed Note: E Blackwater buoy to be withdrawn in Jan 09.

556, WATERFORD, line 1, Hook Hd, add: Fog Det Lt VQ.

557, DUNGARVAN, line 4, Mine Head, 20s, amend: 30s.

557, BALLYCOTTON, line 1, Ballycotton Lt, add: Fog Det Lt VQ.

557, BALTIMORE and FASTNET, line 4, Fastnet, add: Fog Det Lt VQ.

561, DUBLIN, Navigation, tinted box, lines 2/3, amend: Beware of shipping; small craft must keep outside fairway buoys.

Chartlet, substitute chartlet below showing new buoyage at entrance to harbour.

562, DUN LAOGHAIRE, Chartlet, W Breakwater light, amend: Fl(2).G.8s; E Breakwater light, amend: Fl(2)R.8s; add: Fog Det Lt VQ.

579, COURTMACSHERRY, Navigation, line 6, amend: ... has unlit perch (ruin). To NNW ...

581, BALTIMORE, Shelter, lines 2/3, in 1·5m depth, amend: in 2·4m depth.

Facilities, line 4, Glenans Irish Sailing School, ☒, add: 028 20154.

584, KENMARE RIVER, Shelter, Ballycrovane, line 1, delete: x; substitute: ⚓.

AREA 13, N IRELAND

596, DUNDALK, lines 4/5, Pile Light, delete: Fog Det Lt ... brg 358°.

596, CARLINGFORD LOUGH, lines 4/5, Haulbowline, delete: Fog Det Lt ... 196° - 208°.

596, BELFAST LOUGH and BANGOR, line 1, Mew I, add: Fog Det Lt VQ.

596, RATHLIN ISLAND, line 5, Rathlin W, add: Fog Det Lt VQ.

597, INISHTRAHULL TO BLOODY FORELAND, line 1, Inishtrahull, add: Fog Det Lt VQ.

598, GALWAY BAY and INISHMORE, RH column, lines 1/2, Kilronan Pier Hd, delete entry; substitute: Inishmaan, Ldg lts 199°, Oc 6s 8M; 53°06'·08N 09°34'·77W.

600, CARLINGFORD LOUGH, lower chartlet, at N end of Greer's Quay Landing (approx 1·5M S of Warrenpoint) insert: * Fl.5s; at entrance to lough, Haulbowline Lt, delete: FR.21m9M.

601, CARLINGFORD LOUGH, Lights and Marks, line 2, delete: also turning lt ... 196° - 208°.

Ed Note: Haulbowline Light is to be discontinued in Jan 2009.

613, RIVER BANN AND COLERAINE, Chartlet, inset, text box, amend: When closed the opening span has a clearance of 4·9m.

619, INISHBOFIN, line 3, amend: ... 2 conspic W trs and dir RWG Lt lead 032°. ...

Line 5, after FW, add: (on both piers).

620, GALWAY BAY, Chartlet, delete SPM buoy, Fl(5)20s, approx 4M N of Black Head; insert Ocean Energy Test Site centred on 51°13'·7N 09°15'·8W. Ed Note: The site is approx 3ca square marked by cardinal buoys.

620, GALWAY BAY, RH column, Aran Islands, line 3, ☒, amend: 099 20946;

Line 8, delete: Kilronan Pier Fl WG 1·5s;

Line 9, delete: Inishmaan unlit; substitute: Inishmaan Ldg lts 199°, both Oc 6s 8M.

621, GALWAY BAY, Chartlet, delete PHM buoy SE of Mutton Island, Fl(2)R.6s Mutton Island. Insert legend Visitors Moorings E of Mutton Island Causeway in approx 3m. Ed Note: 120 moorings have been laid for the Volvo Ocean Race (23 May - 6 Jun 2009). Shelter, penultimate line, for 'less' read 'lee'.



CORRECTIONS TO 2009 REEDS CHANNEL ALMANAC

REFERENCE DATA

27, Facilities, Ed Note: Following a request from a reader, locks which may limit access for broad-beamed yachts will be shown in future. The following locks in Areas 1-3 have a width of less than 10m:

- 106, Island Harbour, 7.9m
- 113, Hythe Village Marina, 8m
- 122, Port Solent, 9m
- 123, Southsea Marina, 6.5m
- 125, Birdham Pool, 5m
- 125, Chichester Marina, 7m
- 133, Shoreham, 5.5m (commercial lock (16.4m) also available)

AREAS 1-3, VERTICAL CLEARANCES. Most overhead clearances are now measured from HAT. Where clearances are shown to be measured from MHWS the following amendments should be made in the text and/or chartlets:

- 90, Poole, Poole Bridge (closed), 1.8m
- 111, Southampton, Itchen Bridge, 23m
- 112, Southampton, Itchen Bridge, 23m
- 132, Littlehampton, footbridge, 3m

AREA 1, SW ENGLAND

33, TEIGNMOUTH, line 2, Spratt Sand, delete entry; substitute: Bar \blacktriangle Fl G 2s; 50°32'44N 03°29'25W.

33, RIVER EXE to SIDMOUTH and AXMOUTH, delete lines 1 to 5; substitute:

Exe \blacktriangle Mo(A) 10s; 50°35'92N 03°23'75W.

No. 1 \blacktriangle 50°36'07N 03°23'78W.

No. 2 \blacktriangle 50°36'03N 03°23'91W.

Line 9, Straight Point, delete entry.

51, PLYMOUTH, LH column, lower chartlet, substitute chartlet on page 2 showing new commercial pontoon and associated lights. RH column, Sutton Hbr, lines 1/2, \blacktriangle amend: 204702; delete: 07785 986921, \blacktriangle 204693.

56, RIVER YEALM, Lights and Marks, lines 5/6, delete: but not before ... S shore; substitute: the second buoy (not before) ...

57, SALCOMBE, Shelter, line 4, delete: Middle Ground (2.4m); Navigation, RH column, line 4, after ... limit 8kn, add: but 6kn between Marine Hotel/racing start line and the Saltstone (approx 50°15'2N 03°45'5W).

Chartlet and inset, delete \blacktriangle symbol on Middle Ground (S of Snapes Point).

57, KINGSBRIDGE, last paragraph, lines 1/2, amend: \blacktriangle AB on pontoon on W side of basin or on the wall N of the pontoon marked ...

58, PASSAGE INFORMATION, penultimate paragraph, line 3, delete: (AC 26).

63, BRIXHAM, Charts, delete: 26.

63, PAIGNTON, line 2, delete: 26.

64, TORQUAY, Charts, delete: 26.

64, TEIGNMOUTH, Charts, delete: 26.

Navigation, lines 3/4, delete: AC 26 ... such shifts.

Ed Note: AC 26 was due to be withdrawn, without replacement, in Dec 08.

65, TEIGNMOUTH, Chartlet, insert SHM buoy, \blacktriangle Fl.G.2s, in position 50°32'44N 03°29'25W (E of The Bar).

Move PHM buoy, Fl.R.2s, NE of East Pole Sand, approx 100m S to 50°32'35N 03°29'36W.

65, PASSAGE INFORMATION (LYME BAY etc), line 5, after Straight Pt, delete: (It).

65, RIVER EXE, Navigation, delete in toto, substitute:

WPT 50°35'92N 03°23'75W, Exe SWM buoy, 335%6ca to No 7 SHM buoy.

Up to date AC 2290 is essential. Leave WPT at approx LW+2 (or when there is sufficient rise of the tide) when hazards can be seen and some shelter obtained, or at HW-1 or HW-2 to reach Exmouth or Topham, respectively, at slack water.

The new (2008) approach channel, with a least depth of 0.4m, is well marked with PHM/SHM buoys, some of which are lit. Night entry is not advised. After No 10 PHM buoy do not cut the corner round Warren Point; turn to the SW after passing No 12 PHM buoy. Beware of the flood stream setting towards Exmouth and the moorings.

The estuary bed is sand/mud, free of rocks. Follow the curve of the channel rather than straight lines between the buoys; some bends are marked on the outside only. The estuary is an international conservation area.

Lights and Marks, line 4, delete: do not use ... SHM buoy.

Telephone, add: HM (01392) 274306.

66, RIVER EXE, Chartlet, substitute chartlet inset on page 3 showing new buoyage in approaches to the river.

77, WEYMOUTH, Navigation, penultimate line, N Quay, amend: Commercial Pier.

Chartlet, insert: *Commercial Pier* between *Custom Hse Quay* and the 2F.G(vert) light (approx 50°36'5N 02°26'8N).

78, LULWORTH RANGES, Information, firing will take place during the following weekends in 2009:

24/25 January

14/15 March

4/5 April

18/19 July

3/4 October

14/15 November

Firing will not take place on all other weekends and during the following periods:

20 December 2008 - 4 January 2009

10 - 19 April

2 - 4 May

23 - 31 May

25 July - 31 August

19 December - 3 January 2010

AREA 2, CENTRAL S ENGLAND

81, YARMOUTH, line 2, Yarmouth Road, delete entry; substitute: Poole Belle \blacktriangle Fl Y; 50°42'51N 01°30'08W.

82, CALSHOT REACH, last line, Bald Head, amend: \blacktriangle Fl G 2-5s (position unchanged).

82, SOLENT MARKS, RH column, line 10, No Man's Land Ft, delete light. *Ed Note:* The fort is presently unlit; a PHM buoy, Iso.R.2s, has been established approx 0.5ca to the NE.

83, SOUTH EAST COAST OF the ISLE OF WIGHT, line 5, West Princessa, \blacktriangle (ECM), amend \blacktriangle (WCM).

88, POOLE HARBOUR, Lights and Marks, Poole Bridge, delete last two paras, substitute:

Poole Bridge opens daily, only if vessels are waiting, at:

0530, 0630, 0730, 0930, 1030, 1230, 1430, 1630, 1730 (Sat, Sun and Bank Holidays only), 1830, 1930, 2130, 2345.

Pleasure craft may pass when bridge is opened for commercial traffic. Monitor Ch 14 for further information.

87 and 90, POOLE HARBOUR, Chartlets, amend text boxes containing bridge opening times as at **88** above.

99, YARMOUTH, Chartlet, delete Y SPM buoy, Fl.Y.4s (approx 1ca WNW of pierhead); insert Y SPM buoy, \blacktriangle Fl Y, Poole Belle, 50°42'51N 01°30'08W (0.6ca W of pierhead).

113, SOUTHAMPTON, Lights and Marks, lines 13/14 (4th para), delete: Ent to Ocean Village ... on E bank. *Ed Note:* The sheds are being demolished (Nov 08).

123, LANGSTONE HARBOUR, Shelter, line 3, delete: ... 2 more on E side ...

Chartlet (LH column), \blacktriangle at 50°48'42N 01°01'83W (SW of Sword Sands), amend: \blacktriangle Fl(2)R 5s. Delete No.2 \blacktriangle (SW of Fairway Bn, close to Rowey Wk).

Chartlet (RH column), delete \blacktriangle on E side of entrance.

AREA 3, SE ENGLAND

130, OFFSHORE MARKS, RH Col, line 4, South Varne, delete: *Whis*;

line 10, CS 4, delete: *Whis*;

line 11, CS 5, lat/long, amend: 51°27'35N 01°52'76E.

132, LITTLEHAMPTON, Chartlet, insert Q.R bcn on W side of channel at 50°48'25N 00°32'62W (NE of David Hillyard BY).

Shelter, line 2, delete: (0.6m); substitute: (0.8m).

Navigation, line 12, ... subtract 0.6m ... ; substitute: ... subtract 0.8m ...

Telephone, line 2, delete: Duty Officer mob 07775 743078.

147, DOVER STRAIT, CA4 buoy (WNW of Calais), rename: Calais Approche.

CORRECTIONS TO 2009 REEDS EASTERN ALMANAC

REFERENCE DATA

23, Facilities, Ed Note: Following a request from a reader, locks which may limit access for broad-beamed yachts will be shown in future. The following locks in Areas 1, 3, 4 & 5 have a width of less than 10m:

42, Gillingham Marina, 6m
49, Gallions Point Marina, 7.6m
49, South Dock Marina, 6.4m
49, Limehouse Marina, 8m
50, Chelsea Harbour, 5.5m
50, Brentford Dock, 4.8m
68, Shotley Marina, 7m
72, Mutford Lock, 5.9m
136, Hull Marina, 8.5m
141, Hartlepool Marina, 8.9m
143, Royal Quays Marina, 7.5m
163, Forth and Clyde Canal, 6m

AREAS 1, 3, 4 & 5 VERTICAL CLEARANCES. Most overhead clearances are now measured from HAT. Where clearances are shown to be measured from MHWS the following amendments should be made in the text and/or chartlets:

39, The Swale, Kingsferry Bridge, 28m
41, River Medway, Rochester Bridge, 5.4m
41, River Medway (inset chartlet N to S):
Medway, Medway Bridge, 16.2m
Whornes, power lines, 34m
Clinkham, power lines, 43m
Wouldham, power lines, 25m
Hawkwood, power lines, 27m
Lower Cut, power lines, 27m
New Hythe, footbridge, 10.7m
Ditton, bridge, 2.3m
Aylesford, bridge, 2.7m
Allington, bridge, 8.9m
49, St Katharine Haven, Tower Bridge, 8m
137, River Humber, Humber Bridge, 29m
138, River Ouse, Ousefleet power lines, 42m
138, River Trent, Hillside power lines (x2), 35m/39m
169, River Tay, Tay River Bridge, 21m
169, River Tay, Tay Railway Bridge, 21m
170, Montrose, New Bridge, 2.4m

AREA 1, E ENGLAND

30, THE SWALE, lines 1-12, delete in toto; substitute:

Whitstable Street Δ Fl R 2s; 51°24'00N 01°01'54E.
Columbine Δ Fl G 2s; 51°24'26N 01°01'34E.
Columbine Spit Δ Fl (3) G 10s; 51°23'86N 01°00'03E.
Ham Gat Δ Q G; 51°23'08N 00°58'32E.
Pollard Spit Δ Q R; 51°22'98N 00°58'57E.
Sand End Δ Fl G 5s; 51°21'43N 00°55'90E.
Receptive Point Δ Fl G 10s; 51°20'86N 00°54'41E.

Ed Note: The synchronised LED trial has now been completed; the buoys in the approaches to the Swale are now as above and are not synchronised.

30, PRINCES CHANNEL, lines 4-16 (Outer Princes to E Redsand), delete in toto; substitute:

Princes Outer Δ VQ (6) + L Fl 10s; 51°28'89N 01°20'43E.
Princes North Δ Q G; 51°29'25N 01°18'35E.
Princes South Δ Q R; 51°28'74N 01°18'26E.
Princes No.1 Δ Fl (4) G 15s; 51°29'23N 01°16'02E.
Princes No.2 Δ Fl (2) R 5s; 51°28'81N 01°13'08E.
Princes No.3 Δ Fl (2) G 5s; 51°29'33N 01°13'10E.
Princes No.4 Δ Fl (3) R 10s; 51°28'83N 01°09'90E.
Princes No.5 Δ Fl (3) G 10s; 51°29'39N 01°10'00E.
Princes Mid Δ Fl Y 5s; 51°29'19N 01°09'00E.
Shivering Sand Twr N Δ Q; 51°30'01N 01°04'76E.
Shivering Sand Twr S Δ Q (6) + L Fl 15s; Bell; 51°29'75N 01°04'83E.
Princes No.8 Δ Fl (2) R 5s; 51°29'15N 01°03'87E.
Princes Inner Δ Fl Y 2.5s; 51°29'59N 01°03'47E.

32, HARWICH CHANNEL, line 1, Sunk Inner, amend: Δ Iso 3s 11m 12M, Racon T; Horn 30s (position unchanged).

35, THAMES ESTUARY, substitute chartlet on page 5 showing buoy changes at Sunk Inner and Princes Channel, and a windfarm (under construction) on Gunfleet Sand.

Ed Note: A new Thames Estuary southern access route has been established in the Princes Channel, minimum depth 7.9m. See latest edition (Oct 08) of AC 1606; other charts will be amended in due course.

39, THE SWALE, Chartlet, delete light, 2.F(ver), at Ridham Dock (SE of Kingsferry Bridge); amend dir lt (2.FG(ver)) below Kingsferry Bridge: Iso.WRG.6s (Traffic) SS;

Ham Gat SHM buoy (E entrance to The Swale), amend: Δ Q.G;
Pollard Spit PHM buoy, amend: Q.R;
delete South Oaze PHM buoy.
Navigation, lines 2/3, delete: The buoys as far ... LED lights.

42, RIVER MEDWAY, Navigation, tinted box, delete: (MHWS); substitute: (HAT).

46, THAMES TIDAL BARRIER, Control and Communications, lines 5-10, amend:

Inbound yachts and small craft should call London VTS to obtain clearance to proceed through the Barrier when passing Margaret Ness (51°30'54N 00°05'50E).

Outbound yachts and small craft should call London VTS to obtain clearance to proceed through the Barrier when passing Blackwall Point (51°30'30N 00°00'18E).

Testing, the first maintenance closures of 2009 will be:

Tue 13 Jan 0825-1055

Wed 11 Feb 0815-1045

Thu 12 Mar 0755-1025

Thu 9 Apr 0745-1015

Note: Times may vary by up to one hour.

67, RIVERS STOUR AND ORWELL, Main chartlet, delete G Δ at S side of entrance to Felixstowe Dock; delete 2.FG light just S of Felixstowe Dock.

70, RIVER ORE/ALDE, Telephone, lines 1/2, delete: HM Orford 450481.

72, LOWESTOFT, Chartlet, delete ∇ west of Mutford Lock.

Navigation, Bridge to Inner Hbr, lines 2-4, amend: ... every day at 0300, 0500, 0700, 0945, 1115, 1430, 1600, 1800 (w/e & BH only), 1900, 2100 and 2400. Small craft
Facilities, line 2, delete: C (2 ton).

Entry to the Broads, lines 2-6, substitute: ... Oulton Broad from Lake Lothing is via two bridges and Mutford Lock (width 5.9m). The lock is available 0800-1200 and 1300-1730 daily; 0800-1200 and 1300-1930 at weekends/Bank Holidays; 0900-1200 only 1 Nov to 31 Mar. Charge is £10/day. Booking 24 hours in advance is recommended, Δ 01502 531778 or Ch 14.

AREA 3, NE ENGLAND

128, BLAKENEY, Navigation, tinted box, first bullet point, delete: PHM; substitute: IDM

130, KING'S LYNN, RH chartlet, Lynn Cut, delete E Stones Fl.R2-5s and associated beacon.

137, RIVER HUMBER, lower chartlet, Humber Sea Terminal (approx 53°40'N 00°14'W), S end, insert RWG light symbol.

138, GOOLE, Chartlet inset, delete light, F.RG and associated sectors, on Bond Island.

142, SEAHAM, *Ed Note: North Dock is undergoing major re-development with a new 77-berth marina due to open late 2009. South Dock is not normally available to yachts.*

150, BERWICK-UPON-TWEED, Chartlet, delete the gas holders at Spittal; delete the chimney (conspic) S of Tweedmouth.

AREA 4, SE SCOTLAND

156, LEITH and GRANTON, line 2, East Bkwr Hd, delete: Horn (3) 30s.

156, NORTH CHANNEL and MIDDLE BANK, RH column, last line, No. 15, lat/long, amend: 56°01'39N 03°18'95W.

156, GRANGEMOUTH, line 1, Grangemouth App No. 1, FI(3) R 20s, amend: FI(3) 10s;
line 2, Hen and Chickens, FI(3) G 20s, amend: FI(3) G 10s;
last line, Dock Entrance, delete entry.

AREA 5, NE SCOTLAND

182, ORKNEY ISLANDS, line 3, Cantick Hd, amend range: 13M.

183, EDAY and EGILSAY, line 1, Calf Sound, amend: FI (3) WRG 10s 6m W8M, R6M, G6M; W twr; vis: shore-R-215°-W-222°-G-301°-W-305°; 59°14'·21N 02°45'·82W.

184, MAINLAND, WEST, last entry, North Havra, amend: FI (3) WRG (other details unchanged).

187, BUCKIE, Navigation, line 1, substitute: WPT 57°41'·3N 02°59'·0W, 125°0'·8M to ent. The recommended track from the WPT is 128° until the 2F.R (vert) and Oc.R. 10s on the N breakwater are in line (096°), thence to the hbr ent. Beware ...

Chartlet, substitute chartlet on page 6 showing new recommended track and transit.

190, INVERNESS, Navigation, line 4, for Beware marine farms ..., substitute: Beware bird rafts ...

Last line, for Carnare Pt, substitute: Carnarc Pt.

R/T, Insert: *Inverness Marina* Ch 12.

Facilities, lines 1/2, ☒, amend: 220501 or 07526 446348.

190, CALEDONIAN CANAL, *Ed Note: The Caledonian Canal will be closed to through traffic from 24 Dec 08 to 22 Mar 09 for major engineering works. Contact the Canal Office, ☎ 01463 725500, for further details.*

191, INVERNESS, Chartlet, substitute chartlet on page 6 showing minor amendments and correcting a printing error which removed some water from the Caledonian Canal.

192, CROMARTY HARBOUR, lines 8-11, substitute:

... D, ⚓, ⚓ available in harbour. **Cromarty Boat Club**, www.cromartyboatclub.org, 2 ⚓ in 0.5m to 1.5m; showers, ☒, ☒ (owned by Boat Club; key held at Royal Hotel). ☎, ☎. Local ferry to Nigg.

CORRECTIONS TO 2009 REEDS WESTERN ALMANAC

REFERENCE DATA

23, Facilities, *Ed Note: Following a request from a reader, locks which may limit access for broad-beamed yachts will be shown in future. The following locks in Areas 1-6 have a width of less than 10m:*

70, Crinan Canal, 6m

105, Glasson Basin, 7.9m

112, Liverpool (Brunswick Lock), 8m

115, Dinorwic, 9.7m

142, Swansea Marina, 9m

144, Penarth Quays, 7.3m

151, Portishead Marina, 9m

152, Watchet, 7m

195, Kilrush, 9m

AREAS 1-6, VERTICAL CLEARANCES. Most overhead clearances are now measured from HAT. Where clearances are shown to be measured from MHWS the following amendments should be made in the text and/or chartlets:

51, Corpach, Ballachulish Bridge, 16m

116, The Swellies, Menai Bridge, 29m

116, The Swellies, Britannia Bridge, 26m

135, Neyland, road bridge, 36m

150, Bristol (bottom chartlet W to E):

Avon Bridge, 3.4m

Railway Bridge, 0.3m

Plimsoll Swing Bridge, 4.3m

Swing Bridge (Lock), 1m

Gaol Ferry, 5.5m

St Augustine's (x2), 1.8m/0.7m

Prince St Swing Bridge, 0.7m

Redcliffe Bascule, 2.1m

Bedminster Bridge, 1.3m

177, Waterford, Barrow Bridge, 7.1m

184, Kinsale, Kinsale Bridge, 4.7m

217, River Bann, Coleraine Bridge, 4.9m

AREA 1, NW SCOTLAND

31, OUTER HEBRIDES - WEST SIDE, LH column, line 4, after last entry (Haskeir) insert:

Monach Isles ☆ FI (2) 15s 47m **18M**; R brick twr; 57°31'·55N 07°41'·68W.

31, TIREE, COLL and ARINAGOUR, line 1, Loch Eatharna, lat/long, amend: 56°36'·65N 06°30'·90W.

33, STORNOWAY, Lights and Marks, lines 4/5, amend: ... tanks, all conspic then Creed Estuary, Iso WRG 10s, across the harbour; and finally ...

37, SOUND OF HARRIS and LOCH RODEL, delete: AC 2642 (for both places); substitute: AC 2802.

Tinted box, delete in toto (AC 2802 is North-up).

38, ACAIRSEID MHOR, RH column, line 1, reports indicate there are now only 2 ⚓s, at least one of which is submerged at HW Sp.

38, CASTLEBAY, lines 3/4, about 20 ⚓s have been laid to the W of of the pier; they may be encroaching on the recommended anchorage NW of Kiessimul Castle.

38, MONACH ISLANDS, line 6, amend: ... is a conspic red brick lt ho, FI (2) 15s. ⚓s at: E of lt ho; Croic ...

46, LOCH TORRIDON, line 1, delete: AC 228; substitute: AC 2210. Line 5, amend: ... with good ⚓ and 2 ⚓s (up to 10 tons) between the ls and village. 1M to the ...

50, LOCH ALINE, Navigation, line 2, delete: (not easily seen); substitute: (bright orange).

Chartlet: Leading lights 356°, add: Or by both bns; amend elevation of front bn: 2m.

52, CALEDONIAN CANAL, *Ed Note: The Caledonian Canal will be closed to through traffic from 24 Dec 08 to 22 Mar 09 for major engineering works. Contact the Canal Office, ☎ 01463 725500, for further details.*

57, OBAN, Chartlet, move light, (vert) 2F.G, on Oban pier to just W of the Cupola; amend to: 2F.G(vert).

AREA 2, SW SCOTLAND

66, SOUND OF ISLAY, lines 1/2, Rubha'a'Mhàil, amend: FI (3) 15s 45m **19M**; W twr.

66, PORT ELLEN and LOCH INDAAL, line 3, Rubh'an Dùin, amend ranges: W11M, R8M.

70, CRINAN CANAL, *Ed Note: The Crinan Canal will be closed for essential maintenance work from 24 Dec 08 to 16 Mar 09. During this period Crinan Basin and the Dunardry locks will be drained.*

71, TARBERT, LOCH FYNE, Portavadie Marina, last line, add: Entrance marked by FI R 2s and FI (2) G 8s lights.

77, ROTHESAY, Chartlet, Albert Pier light, amend: F.GGW (Hbr open) or 3F.R(vert) (Hbr closed);

Delete 2F.G(vert) on E end of Front Pier;

Front Pier, rename: Main Pier;

On W end of same pier, insert: West Pier.

89, TROON, Lights and Marks, lines 1/2, delete: Sheds (35m) ... at night.

91, KIRKCUDBRIGHT, Lights and Marks, last line, delete: marina; substitute: pontoon.

Chartlet, delete ⚓ Q.R at N end of chartlet; insert:

⚓ Q.R at 54°50'·24N 04°03'·84W (just S of Q.R Bn above);

⚓ Q.R at 54°49'·88N 04°04'·07W (off Gibbhill Pt);

⚓ LFI.G.6s at 54°50'·35N 04°03'·58W (SW end of St Marys Isle).

AREA 3, NW ENGLAND

98, RIVER MERSEY and LIVERPOOL, line 1, Bar, amend: Bar ⚓ FI.5s 12M. (Other details unchanged)

99, PASSAGE INFORMATION, RH column, last paragraph, for (2007), substitute: (2008).

Last two lines, amend: ... but no shelter except, possibly, in Ramsey Bay, IoM.

100, WORKINGTON, Light and Marks, line 5, for Y bands, substitute: R bands.

Telephone, delete: CG 2238.

Facilities, Vanguard SC ☒, amend: 01228 674238.

103, PEEL, Lights and Marks, line 5, 204°, amend: 207°.

106, FLEETWOOD, LH chartlet, delete *2FG(vert)* light at 53°55'·8N 03°00'·9W.

RH chartlet, amend light at 53°55'·75N 03°00'·58W (*Fl.G.3-5s*) to *Iso.G.2s*.

Delete Victoria Pier (N side of Fleetwood).

Insert light, *2FR(vert)* 3m 2M, at W end of submerged/ruined section of Ferry Pier at Knott End-on-Sea.

111, LIVERPOOL, Lights and Marks, line 2, delete: Bar Lt buoy; substitute: Bar Lt float.

113, CONWY AND DEGANWY, Navigation, penultimate line, amend: ... and five unlit pontoons upriver between Bodlondeb Pt and the road/rail bridge.

AREA 4, S WALES AND BRISTOL CHANNEL

126, MILFORD HAVEN, penultimate line, ODAS, amend: Fl(5) Y 20s; 51°36'·70N 05°08'·70W.

127, RIVER AVON, CUMBERLAND BASIN etc, lines 1/2, S Pier Hd, amend: Oc RG 30s 9m 10M and FBU 4m 1M (position unchanged); add: *Bell(1) 10s*.

153, ILFRACOMBE, Chartlet, delete \odot on S side of harbour; amend 'V' numbers on N side: 14-17; amend 'V' numbers on S side: 12-14.

AREA 5, S IRELAND

162, HOWTH, line 4, Baily, add: Fog Det Lt VQ.

Lines 7/8, *Ed Note: N Burford and S Burford buoys to be discontinued in Jan 09.*

162, DUN LAOGHAIRE, line 1, E Bkwtr Hd, amend: Fl (2) R 8s; add: Fog Det Lt VQ. *Ed Note: E and W Breakwater lights to be synchronised from Jan 09.*

162, OFFSHORE MARKS, line 2, Kish Bank, add: Fog Det Lt VQ.

162, ARKLOW to WEXFORD, line 14, *Ed Note: E Blackwater buoy to be withdrawn in Jan 09.*

162, WATERFORD, line 1, Hook Hd, add: Fog Det Lt VQ.

163, DUNGARVAN, line 4, Mine Head, 20s, amend: 30s.

163, BALLYCOTTON, line 1, Ballycotton Lt, add: Fog Det Lt VQ.

163, BALTIMORE and FASTNET, line 4, Fastnet, add: Fog Det Lt VQ.

167, DUBLIN, Navigation, tinted box, lines 2/3, amend: Beware of shipping; small craft must keep outside fairway buoys. Chartlet, [substitute chartlet on page 7](#) showing new buoyage at entrance to harbour.

168, DUN LAOGHAIRE, Chartlet, W Breakwater light, amend: Fl(2).G.8s; E Breakwater light, amend: Fl(2).R.8s; add: Fog Det Lt VQ.

185, COURTMACSHERRY, Navigation, line 6, amend: ... has unlit perch (ruin). To NNW

187, BALTIMORE, Shelter, lines 2/3, in 1.5m depth, amend: in 2.4m depth.

Facilities, line 4, Glenans Irish Sailing School, ☎ , add: 028 20154.

190, KENMARE RIVER, Shelter, Ballycrovane, line 1, delete: x; substitute: \uparrow .

AREA 6, N IRELAND

200, DUNDALK, lines 4/5, Pile Light, delete: Fog Det Lt ... brg 358°.

200, CARLINGFORD LOUGH, lines 4/5, Haulbowline, delete: Fog Det Lt ... 196° - 208°.

200, BELFAST LOUGH and BANGOR, line 1, Mew I, add: Fog Det Lt VQ.

200, RATHLIN ISLAND, line 5, Rathlin W, add: Fog Det Lt VQ.

201, INISHTRAHULL TO BLOODY FORELAND, line 1, Inishtrahull, add: Fog Det Lt VQ.

202, GALWAY BAY and INISHMORE, RH column, lines 1/2, Kilronan Pier Hd, delete entry; substitute: Inishmaan, Ldg Its 199°, Oc 6s 8M; 53°06'·08N 09°34'·77W.

204, CARLINGFORD LOUGH, lower chartlet, at N end of Greer's Quay Landing (approx 1.5M S of Warrenpoint) insert: * Fl.5s; at entrance to lough, Haulbowline Lt, delete: *FR.21m9M*.

205, CARLINGFORD LOUGH, Lights and Marks, line 2, delete: also turning Lt ... 196° - 208°.

Ed Note: Haulbowline Light is to be discontinued in Jan 2009.

217, RIVER BANN AND COLERAINE, Chartlet, inset, text box, amend: When closed the opening span has a clearance of 4.9m.

223, INISHBOFIN, line 3, amend: ... 2 conspic W trs and dir RWG Lt lead 032°. ... Line 5, after FW, add: (on both piers).

224, GALWAY BAY, Chartlet, delete SPM buoy, Fl(5)20s, approx 4M N of Black Head; insert *Ocean Energy Test Site* centred on 51°13'·7N 09°15'·8W. *Ed Note: The site is approx 3ca square marked by cardinal buoys.*

224, GALWAY BAY, RH column, Aran Islands, line 3, ☎ , amend: 099 20946;

Line 8, delete: Kilronan Pier Fl WG 1-5s;

Line 9, delete: Inishmaan unlit; substitute: Inishmaan Ldg Its 199°, both Oc 6s 8M.

225, GALWAY, Chartlet, delete PHM buoy SE of Mutton Island, Fl(2) R.6s *Mutton Island*. Insert legend *Visitors Moorings E* of Mutton Island Causeway in approx 3m. *Ed Note: 120 moorings have been laid for the Volvo Ocean Race (23 May - 6 Jun 2009).*

Shelter, penultimate line, for 'less' read 'lee'.

CORRECTIONS TO 2009 REEDS PBO SMALL CRAFT ALMANAC

CHAPTER 1, NAVIGATION

13, TEIGNMOUTH, line 2, Spratt Sand, delete entry; substitute: Bar \blacktriangle Fl G 2s; 50°32'·44N 03°29'·25W.

13, RIVER EXE, line 2, No. 1, lat/long, amend: 50°36'·07N 03°23'·78W.

After line 2, insert: No. 2 \blacktriangleright 50°36'·03N 03°23'·91W.

Line 3, No.7, delete entry.

16, SOUTHAMPTON WATER/RIVER HAMBLE, line 6, Bald Head, amend: \blacktriangle (other details unchanged).

20, N KENT COAST/THE SWALE, line 7, Whitstable Street, insert: Fl R 2s.

Line 8, Pollard Spit, amend: \blacktriangle Q R (position unchanged).

20, PRINCES CHANNEL, lines 3/4, Princes Appr/E Redsand, delete entries; substitute: Princes Outer \blacktriangle VQ (6) + L Fl 10s; 51°28'·89N 01°20'·43E.

21, HARWICH CHANNEL, line 1, Sunk Inner, amend: \blacktriangleright Iso 3s 11m 12M, Racon T; *Horn 30s* (position unchanged).

25, ORKNEY ISLANDS, line 3, Cantick Hd, amend range: 13M.

27, OUTER HEBRIDES - WEST SIDE, after line 5, insert:

Monach Isles \star Fl (2) 15s 47m **18M**; R brick twr; 57°31'·55N 07°41'·68W.

30, COLONSAY TO ISLAY, lines 5, Rubha'a'Mhàil, amend: Fl (3) 15s 45m **19M**; W twr.

32, RIVER MERSEY APPROACHES, line 1, Bar, amend: Bar \blacktriangleright Fl.5s 12M (other details unchanged).

35, AVONMOUTH/RIVER AVON, lines 3/4, Avonmouth S Pier Hd, amend: Oc RG 30s 9m 10M and FBu 4m 1M (position unchanged); add: *Bell(1) 10s*.

37, PORT OF DUBLIN/DUN LAOGHAIRE, line 8, Dun Loaghaire E Bkwtr Hd, amend: Fl (2) R 8s; add: Fog Det Lt VQ. *Ed Note: E and W Breakwater lights to be synchronised from Jan 09.*

37, DUNGARVAN, line 2, Mine Head, 20s, amend: 30s.

38, DROGHEDA/DUNDALK, line 6, Pile Light, delete: Fog Det Lt ... brg 358°.

38, CARLINGFORD LOUGH, lines 5-7, Haulbowline, delete: Fog Det Lt ... 196° - 208°.

Ed Note: Haulbowline Light is to be discontinued in Jan 2009.

CHAPTER 3, COMMUNICATIONS

102, PLYMOUTH, line 3, \blacktriangle amend: 204702.

106, INVERNESS, Inverness Marina, add: Ch 12.

CHAPTER 4, SAFETY

133, NATIONAL COASTWATCH INSTITUTION (NCI), Table:

Area 2, Lee on Solent, \blacktriangle , amend: 023 9255 6758; add: Gosport, 023 9276 5194;

Area 3, add: Shoreham, 07530 041733; Folkestone, amend: Folkestone (Copt Pt).