



Corrections for June 2009  
with the compliments of Adlard Coles Nautical

**REEDS**

**Nautical Almanac 2009**  
**Channel Almanac 2009**  
**Eastern Almanac 2009**  
**Western Almanac 2009**  
**Reeds PBO Small Craft Almanac 2009**

Corrections to 4th June 2009 include Admiralty Notices to Mariners Week 23

#### EDITORIAL NOTES

1. Corrections to the above Almanacs are placed on [www.reedsalmanac.co.uk](http://www.reedsalmanac.co.uk) at the following intervals: In early January (covering the period since going to press in June); and thereafter at the start of each month from February through to June. There is no repetition, except where an earlier correction is modified by later data.
2. We thank those who have contributed helpful suggestions, all of which are considered and, if feasible, included. Please tell the Editors as soon as possible of any corrections to the Almanac(s) thought to be necessary, particularly as a result of experience at sea. Our e-mail address is [info@reedsalmanacs.co.uk](mailto:info@reedsalmanacs.co.uk)
3. **Contents**  
**Pages**
  - 2-5 Reeds Nautical Almanac
  - 6 Reeds Channel Almanac
  - 7 Reeds Eastern Almanac
  - 7 Reeds Western Almanac
  - 7 Reeds PBO Small Craft Almanac.

Adlard Coles Nautical  
A&C Black Publishers Ltd  
36 Soho Square  
London, W1D 3QY

Tel 0207 758 0200  
Fax 0207 758 0222  
[www.reedsalmanac.co.uk](http://www.reedsalmanac.co.uk)

## CORRECTIONS TO 2009 REEDS NAUTICAL ALMANAC

### CHAPTER 5, COMMUNICATIONS

**123, Germany**, 3rd para, list of remote antenna stations, delete entire list, replace with: Blumenthal / Borkum / Cuxhaven / Helgoland / Kampen / Norderney / Stade / Wangerooge / Westerhever. [Paste in attached chartlet 7\(8\) below.](#)



### CHAPTER 7, SAFETY

**121, National Coastwatch Institution**, table of stations, Area 11, before Worms Head, insert: Wooltack Point (St Brides Bay) 07817 871549.

### AREA 1, SW ENGLAND

**150, AREA MAP**, *Ed Note: The extension to the TSS between the Isles of Scilly and Land's End, to be implemented on 1 Jul 09, does not include any change to the ITZs. This Note amends the correction on Page 2 of the Feb 09 Update.*

**161, HELFORD RIVER**, Navigation, line 2, amend: ... August Rock marked by SHM buoy, Fl G 5s. From ...

Chartlet, SHM buoy S of August Rock, delete: (PA)(seasonal); amend: Fl.G.5s.

### AREA 2, CENTRAL S ENGLAND

**210, EMSWORTH CHANNEL**, line 1, Fishery, lat/long, amend: 50°47'·38N 00°56'·07W.

**210, CHICHESTER CHANNEL**, line 4, Stocker, lat/long, amend: 50°47'·46N 00°55'·54W.

**213, POOLE HARBOUR**, Lights and Marks, Poole Bridge lifting times, 1230, substitute: 1200.

*Ed Note: This new time is effective until 1 Oct 09. For other 2009 opening times see the amendment on Page 3 of the Jan Update.*

**215 and 217, POOLE HARBOUR**, chartlets, amend text boxes containing bridge opening times as above.

**224, KEYHAVEN**, Facilities, add: ⚓, if available, £9/night.

**248, PORTSMOUTH**, chartlet, delete *Rame Head* and associated hulk symbol (approx 50°49'·35N 01°08'·20W).

### AREA 4, E ENGLAND

**320, RIVERS STOUR AND ORWELL**, Inset chartlet of Ipswich, move PHM buoy, Q.R, at entrance to Fox's Marina approx 0·6ca SSE to 52°02'·06N 01°09'·39E.

**320/321, RIVER STOUR**, *Ed Note: Extensive dredging works are taking place on Harwich Shelf E of Harwich. The recommended yacht track is W of its currently charted position between Cliff Foot PHM buoy and Guard PHM buoy while works continue. More details may be found at [www.hha.co.uk/leisure.html](http://www.hha.co.uk/leisure.html). Small craft are advised to monitor VHF Ch 71 (Harwich VTS) for latest information.*

### AREA 5, NE ENGLAND

**336, THE WASH TO THE RIVER HUMBER**, line 5, N Outer Dowsing, add: **Racon (T) 10M**; line 7, B.1D Platform, delete: **Racon (T) 10M**.

### AREA 9, SW SCOTLAND

**465, TARBERT, LOCH FYNE**, chartlet, delete YBY bcn, VQ(9), just west of Sgeir Bhuidhe, substitute: ⚓ (WCM buoy), VQ(9).10s.

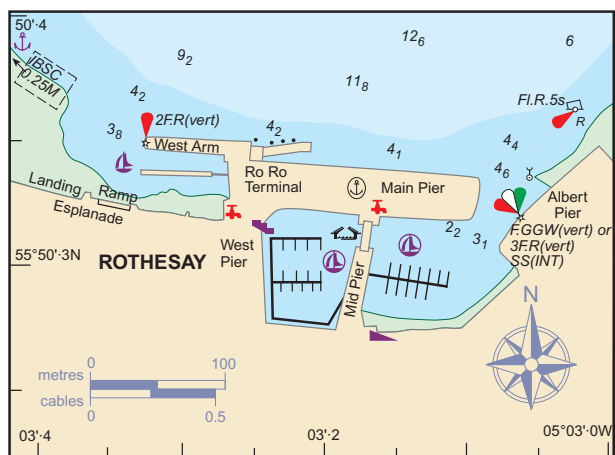
**471, ROTHESAY**, Shelter, substitute:

**SHELTER** Good in Outer and Inner Harbours, and on pontoons S of West Arm, but beware of very strong easterly flow towards the rocks on the E side of the harbour due to wash during ferry manoeuvres (and whilst berthed). No berthing on north and east faces of Main Pier. 20 ⚓, and good ⚓ off Isle of Bute SC, in Rothesay Bay. Exposed to N/NE when Kyles of Bute or Kames Bay offer better shelter.

Chartlet, [substitute amended chartlet below](#) showing new pontoon berths in Inner harbour and new Ro-Ro berth.

Facilities, lines 1-5, substitute:

**FACILITIES** 60 ⚓ AB (Bute Berthing Co) £14 for 8m LOA, £19 for 11m LOA, electricity, FW, Slip, L, ME, ⚓; showers/toilets on Rothesay Pier; D by arrangement week days only (min 200 galls). ⚓s £7/night. **Town P & D ...**



### AREA 11, S WALES AND BRISTOL CHANNEL

**516, Area Map**, insert Coastwatch symbol, ©, at Wooltack Pt (approx 51°44'N 05°15'W, on mainland just east of Skomer) (see AC 1482).

**550, PADSTOW**, chartlet, insert PHM buoy, Fl.R, at 50°32'·65N 04°56'·08W (close NE of the Q.G SHM buoy in the entrance channel to Padstow Harbour).

### AREA 12, S IRELAND

**556, ARKLOW TO WEXFORD**, lines 5/6, Arklow Lanby, *Ed Note: Due to be replaced by a SCM superbuoy 8ca NNW in Aug 09.*

**556, TUSKAR ROCK TO OLD HEAD OF KINSALE**, line 4, Fundale, lat/long, amend: 52°11'·04N 06°19'·78W.

### AREA 13, N IRELAND

**621, GALWAY**, chartlet, [substitute amended chartlet at top of next page](#) showing new buoys and moorings area between Mutton Island and Hare Island.

### AREA 15, GERMANY

*Ed Note: New editions of AC 1423 (1:375,000) and 3767 (1:150,000) include important information relating to changes in Firing Practice Areas.*

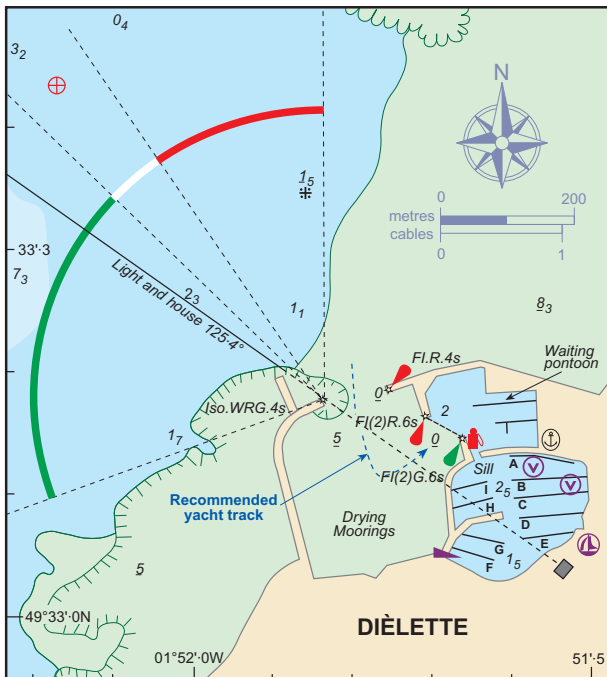
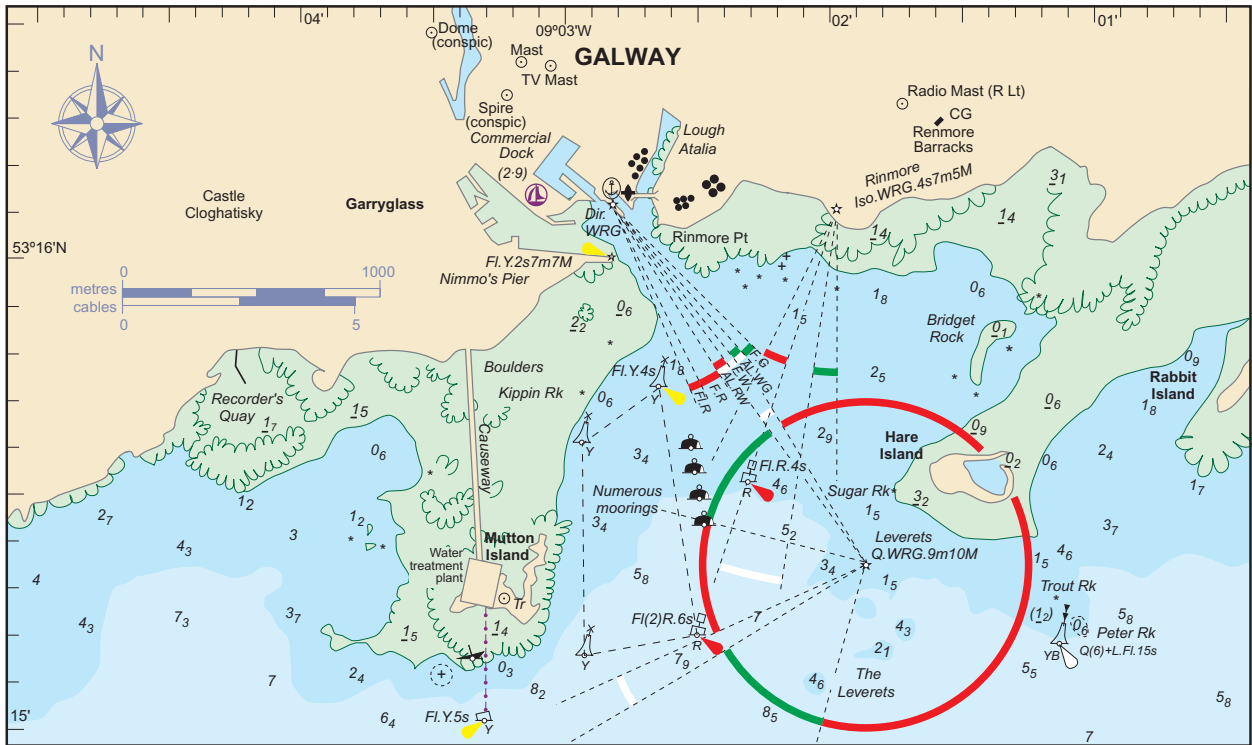
### AREA 17, NORTH FRANCE

**735, BOULOGNE-SUR-MER**, chartlet, ⚓ at N end of Digue Carnot, Fl(2+1)5s, amend: Fl(2+1)15s.

**759, CHERBOURG**, Charts, AC, 2602, amend: 1112.

### AREA 18, CENTRAL NORTH FRANCE

*Ed Note: New AC 2028 and 2029 detailed in May update now available in ARCS.*



**AREA 24, PORTUGAL & THE AZORES**

*Ed Note: New edition of AC3635 (1:200,000) includes changes to depths, lights, wrecks and coastline, as well as detailing the limits of the new Off The Coast of Portugal Vessel Reporting System (COPREP), which yachts are invited to participate in.*

772, DIELETTE, chartlet, [paste in attached chartlet above](#), which depicts a new leading line.

**AREA 20, NORTH BRITANNY**

*Ed Note: New AC 2027 and 2029 detailed in May update now available in ARCS.*

815, AREA MAP, TSS inset, 1st para, line 2, 2644, amend: 2647.

821, PASSAGE INFORMATION, North Brittany, line 1, 2644, amend: 2647.



## CORRECTIONS TO 2009 REEDS CHANNEL ALMANAC

### AREA 1, SW ENGLAND

**30, AREA MAP**, *Ed Note: The extension to the TSS between the Isles of Scilly and Land's End, to be implemented on 1 Jul 09, does not include any change to the ITZs. This Note amends the correction on Page 2 of the Feb 09 Update.*

**39, HELFORD RIVER**, Navigation, line 2, amend: ... August Rock marked by SHM buoy, Fl G 5s. From ...

Chartlet, SHM buoy S of August Rock, delete: (PA)(seasonal); amend: Fl.G.5s.

### AREA 2, CENTRAL S ENGLAND

**83, EMSWORTH CHANNEL**, line 1, Fishery, lat/long, amend: 50°47'·38N 00°56'·07W.

**83, CHICHESTER CHANNEL**, line 4, Stocker, lat/long, amend: 50°47'·46N 00°55'·54W.

**87 and 90, POOLE HARBOUR**, chartlets, amend text boxes containing bridge opening times as above.

**88, POOLE HARBOUR**, Lights and Marks, Poole Bridge lifting times, 1230, substitute: 1200.

*Ed Note: This new time is effective until 1 Oct 09. For other 2009 opening times see the amendment on Page 3 of the Jan Update.*

**97, KEYHAVEN**, Facilities, add: ⚓, if available, £9/night.

**121, PORTSMOUTH**, chartlet, delete *Rame Head* and associated hulk symbol (approx 50°49'·35N 01°08'·20W).

### AREA 4, NORTH FRANCE – DUNKERQUE TO CAP DE LA HAGUE

**161, BOULOGNE-SUR-MER**, chartlet, ⚓ at N end of Digue Carnot, Fl(2+1)5s, amend: Fl(2+1)15s.

**185, CHERBOURG**, Charts, AC, 2602, amend: 1112.

### AREA 5, CENTRAL NORTH FRANCE – CAP DE LA HAGUE TO SAINT QUAY PORTRIEUX

*Ed Note: New AC 2028 and 2029 detailed in May update now available in ARCS.*

**196, DIELETTE**, chartlet, [paste in attached chartlet on page 3](#), which depicts a new leading line.

### AREA 7, NORTH BRITANNY – PAIMPOL TO ÎLE D'OUESSANT

*Ed Note: New AC 2027 and 2029 detailed in May update now available in ARCS.*

**239, AREA MAP**, TSS inset, 1st para, line 2, 2644, amend: 2647.

**242, PASSAGE INFORMATION**, North Brittany, line 1, 2644, amend: 2647.

## CORRECTIONS TO 2009 REEDS EASTERN ALMANAC

### AREA 1, E ENGLAND

**67, RIVERS STOUR AND ORWELL**, Inset chartlet of Ipswich, move PHM buoy, Q.R, at entrance to Fox's Marina approx 0·6ca SSE to 52°02'·06N 01°09'·39E.

**67/68, RIVER STOUR**, *Ed Note: Extensive dredging works are taking place on Harwich Shelf E of Harwich. The recommended yacht track is W of its currently charted position between Cliff Foot PHM buoy and Guard PHM buoy while works continue. More details may be found at [www.hha.co.uk/leisure.html](http://www.hha.co.uk/leisure.html). Small craft are advised to monitor VHF Ch 71 (Harwich VTS) for latest information.*

### AREA 3, NE ENGLAND

**126, THE WASH TO THE RIVER HUMBER**, line 5, N Outer Dowsing, add: **Racon (T) 10M**; line 7, B.1D Platform, delete: **Racon (T) 10M**.

## CORRECTIONS TO 2009 REEDS WESTERN ALMANAC

### AREA 2, SW SCOTLAND

**71, TARBERT, LOCH FYNE**, chartlet, delete YBY bcn, VQ(9), just west of Sgeir Bhuidhe, substitute: ⚓ (WCM buoy), VQ(9).10s.

**77, ROTHESAY**, Shelter, substitute:

**SHELTER** Good in Outer and Inner Harbours, and on pontoons S of West Arm, but beware of very strong easterly flow towards the rocks on the E side of the harbour due to wash during ferry manoeuvres (and whilst berthed). No berthing on north and east faces of Main Pier. 20 ⚓, and good ⚓ off Isle of Bute SC, in Rothesay Bay. Exposed to N/NE when Kyles of Bute or Kames Bay offer better shelter.

Chartlet, [substitute amended chartlet on page 2](#) showing new pontoon berths in Inner harbour and new Ro-Ro berth.

Facilities, lines 1-5, substitute:

**FACILITIES** 60 ⚓ AB (Bute Berthing Co) £14 for 8m LOA, £19 for 11m LOA, electricity, FW, Slip, L, ME, ⚓; showers/toilets on Rothesay Pier; D by arrangement week days only (min 200 galls). ⚓s £7/night. **Town P & D** ...

### AREA 4, S WALES AND BRISTOL CHANNEL

**122, Area Map**, insert Coastwatch symbol, ©, at Wooltack Pt (approx 51°44'N 05°15'W, on mainland just east of Skomer) (see AC 1482).

**156, PADSTOW**, chartlet, insert PHM buoy, Fl.R, at 50°32'·65N 04°56'·08W (close NE of the Q.G SHM buoy in the entrance channel to Padstow Harbour).

### AREA 5, S IRELAND

**162, ARKLOW TO WEXFORD**, lines 5/6, Arklow Lanby, *Ed Note: Due to be replaced by a SCM superbuoy 8ca NNW in Aug 09.*

**162, TUSKAR ROCK TO OLD HEAD OF KINSALE**, line 4, Fundale, lat/long, amend: 52°11'·04N 06°19'·78W.

### AREA 6, N IRELAND

**225, GALWAY**, chartlet, [substitute amended chartlet on page 3](#) showing new buoys and moorings area between Mutton Island and Hare Island.

## CORRECTIONS TO 2009 REEDS PBO SMALL CRAFT ALMANAC

### CHAPTER 1, NAVIGATION

**22, THE WASH TO THE RIVER HUMBER**, line 4, N Outer Dowsing, add: **Racon (T) 10M**; line 7, B.1D Platform, delete: **Racon (T) 10M**.

**37, WICKLOW/ARKLOW**, lines 13/14, Arklow Lanby, *Ed Note: Due to be replaced by a SCM superbuoy 8ca NNW in Aug 09.*

### CHAPTER 4, SAFETY

**136, Germany**, 4th para, list of remote antenna stations, delete entire list, replace with: Blumenthal / Borkum / Cuxhaven / Helgoland / Kampen / Norderney / Stade / Wangerooge / Westerhever. [Paste in attached chartlet below.](#)

