



Corrections for March 2009
with the compliments of Adlard Coles Nautical



Nautical Almanac 2009
Channel Almanac 2009
Eastern Almanac 2009
Western Almanac 2009
Reeds PBO Small Craft Almanac 2009

Corrections to 26th February 2009 include Admiralty Notices to Mariners Week 10

EDITORIAL NOTES

1. Corrections to the above Almanacs are placed on www.reedsalmanac.co.uk at the following intervals: In early January (covering the period since going to press in June); and thereafter at the start of each month from February through to June. There is no repetition, except where an earlier correction is modified by later data.
2. We thank those who have contributed helpful suggestions, all of which are considered and, if feasible, included. Please tell the Editors as soon as possible of any corrections to the Almanac(s) thought to be necessary, particularly as a result of experience at sea. Our e-mail address is info@reedsalmanacs.co.uk

3. Contents

Pages

- 2-4 Reeds Nautical Almanac
- 5 Reeds Channel Almanac
- 6 Reeds Eastern Almanac
- 7 Reeds Western Almanac
- 8 Reeds PBO Small Craft Almanac.

Adlard Coles Nautical
A&C Black Publishers Ltd
38 Soho Square
London, W1D 3HB

Tel 0207 758 0200
Fax 0207 758 0222
updates@reedsalmanac.co.uk
www.reedsalmanac.co.uk

CORRECTIONS TO 2009 REEDS NAUTICAL ALMANAC

CHAPTER 6, WEATHER

95, WEATHER BY MOBILE PHONE, Marinecall SMS service has closed. Delete page 95 RH column and table at top of page 96. Note: Marinecall phone and fax services are unaffected.

CHAPTER 9, HARBOURS, COASTS AND TIDES

AREA 1, SW ENGLAND

157, ISLES OF SCILLY, RH column, New Grimsby Sound, line 1, Appr (line E), amend: Appr (line G); line 5, HM ☎, delete landline number (422849)

159, ST MARY'S, Facilities, line 2, delete: ☎ 423343; amend mobile ☎: 07789 273626.

Line 5, 1.5-2.1m, amend: 1.5-2.7m.

Line 6, <13m, amend: <12m; <20m, amend: <18m.

Line 9, delete: (cans); ferry berth, amend: middle berth.

Line 14, ☎, amend: 422665 (tickets).

162, FALMOUTH, R/T, lines 2/3, delete: Port Falmouth.

Facilities, Port Falmouth Marina, delete entry; substitute:

Port Falmouth Marina A new marina is planned between Queen's Jetty and Duchy Wharf; it may be open in 2010.

Ed Note: Work on this marina has not yet started; it unlikely to be open until at least 2010. The Empire Jetty and King's Jetty have been demolished but are now 'obstructions'. Keep well clear.

163, FALMOUTH, Chartlet, delete Port Falmouth Marina in old docks area. See Ed Note above.

170, POLPERRO, Facilities, line 4, after: ... moorings outside ent, add: (£10-£15 depending on size).

Ed Note: There are plans to make about 5 berths available in the inner harbour. However, from early 2009 the storm gates will be refurbished causing inevitable disruption. Contact HM (01503 272423) for current situation.

180, DARTMOUTH, Services, Dartside Quay, delete: SM; Town, insert: SM.

198, PORTLAND HARBOUR, Chartlet, insert *Fl.G.3s* light on the knuckle of the Sailing Academy breakwater (approx 50°34'42N 02°27'38W).

Portland Marina, line 4, ☎, amend mob: 07977 586128.

AREA 2, CENTRAL S ENGLAND

209, CALSHOT REACH, line 2, Calshot Spit, 12m 11M, amend: 5m 10M (other details unchanged).

224, CHRISTCHURCH, Chartlet, amend light, *2F.G.*, at E edge of chartlet to: *Fl.G.2s*.

227, LYMINGTON, Navigation, line 5, 1.1m, amend: 1.7m.

Facilities, before Marinas, insert: HM Office between Royal Lymington YC and Lymington Town SC.

Town Quay, line 1, amend: public pontoon, AB and many ☎ £12.50/craft ...; line 2, amend: ... WCs and showers, slip After Town Quay, add: 5 scrubbling grids (see HM).

AREA 3, SE ENGLAND

268, NEWHAVEN, Main chartlet, insert new light, *Fl.G.5s*, on N end of old gridiron at Car Ferry Terminal just below swing bridge; delete light, *3FR(vert)*, at N end of marina; insert light, *2FR(vert)*, at end of jetty close SE of water tap symbol.

Shelter, line 4, (mostly dredged to 2m), amend: (mostly dredged to 1m).

Navigation, lines 2/3, delete: Ferries/cargo ... across the hbr.

273, DOVER, Navigation, last line, delete: Beware high speed ... Wales pier.

Facilities, last line, add: also to Dieppe (6/week).

AREA 4, E ENGLAND

284, APPROACHES to THAMES ESTUARY, line 7, NE Spit, add: Racon (T) 10M.

284, PRINCES CHANNEL, line 1, Outer Tongue, delete entry (buoy discontinued).

295, RIVER MEDWAY, RH column, Yacht Clubs, ☎s (all code 01634) amend: Hoo Ness YC: 250052; Hundred of Hoo SC: 250102; RNSA: 200970.

299, THAMES TIDAL BARRIER, Testing, maintenance closures from May to Oct 2009 will be:

Fri 8 May 0815-1040

Tue 9 Jun 0910-1140

Thu 9 Jul 0935-1205

Thu 6 Aug 0840-1110

Mon 7 Sep 1010-1240

Sun 4 Oct 0825-1825

Note: Times may vary by up to one hour.

Ed Note: See January Update for earlier closures.

301, RIVER THAMES, Facilities, Greenwich YC, ☎, amend: 0844 736 5846.

314, RIVER COLNE, Chartlet, [paste in attached chartlet on page 3](#) showing a new PHM buoy (S of No 24), and removal of sector lights, fuel and water facilities in the upper reaches.

Ed Note: The slipways at Brightlingsea (eastern of the 2 slips; see inset chartlet) and at Wivenhoe are privately owned. A new 50-berth private marina has been constructed near the Town Jetty. More details when known.

321, RIVER STOUR, Telephone, Police, amend: 0300 3334444.

Facilities, last paragraph (Mistley and Manningtree), substitute:

MANNINGTREE, AB (drying), FW. **Stour SC** ☎ (01206) 393924, M (drying but free), FW, Bar, showers. **Town P & D** (cans), ☎, Gas.

322, RIVER ORWELL, Telephone, line 1, Orwell Navigation Service, amend: 211066.

Facilities, Pin Mill, delete: HM ☎ 780621 ... 260568; substitute: King's Boatyard ☎ 780256 M (£6.50/night). Fox's Marina, SM, delete: ☎ 659878.

AREA 5, NE ENGLAND

340, KING'S LYNN AND WISBECH, RH chartlet, Lynn Cut, east side, amend *Low Cut: Q.R.*

341, BOSTON, Shelter, lines 4/5, delete: Moorings may ... fixed bridge.

Adjacent Harbours, River Welland, lines 8/9, delete: Also at Fosdyke ... stbd side.

350, WHITBY, Chartlet, [substitute attached chartlet on page 4](#) which includes new pontoons off the fish pier and at Whitby Marina.

352, SEAHAM, Shelter, lines 2-5, amend: Small craft normally berth in North Dock, which dries and is under development. Shelter is variable and dock can be subject to considerable swell. South Dock is not usually available to non-commercial vessels.

Ed Note: See also Jan Update re new marina at Seaham.

Lights and Marks, line 3, delete: (often shows FG in bad weather).

R/T, times, amend: 0800-1700 (Mon-Fri).

Telephone, amend: (Code 0191) HM 07786 565205; Admin Office 5161700; ... Police 0345 6060365; Dr 5812332.

AREA 6, SE SCOTLAND

368, EYEMOUTH, Facilities, lines 2/3, delete: D (see HM ... P (cans); substitute: D (in Gungreen Basin).

Lines 4/5, delete: Gungreen House ... domestic facilities.

Web address, amend: www.eyemouthharbour.org.

Chartlet, insert ⚡ (diesel fuel pump) on Gungreen Basin breakwater, next to ⚓ (fishing harbour symbol).

369, DUNBAR, Facilities, lines 1/2, D (delivery), amend: D (quayside).

369, NORTH BERWICK, line 10, HM Mob, amend: 07776 467373.

377, ANSTRUTHER, Telephone, line 2, Police, amend: 08456 005702.

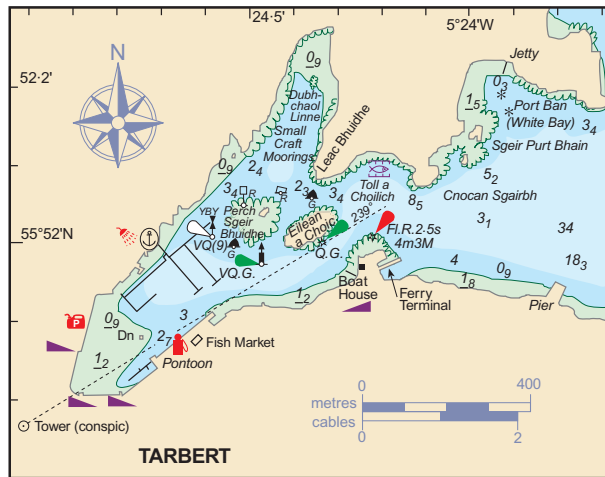
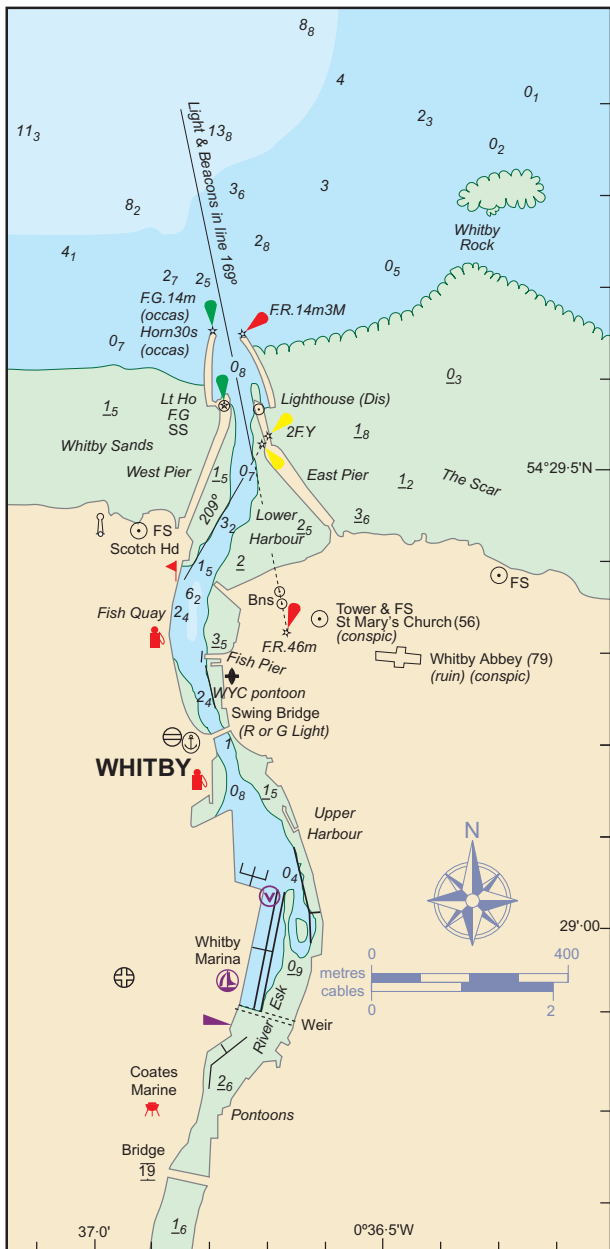
Facilities, line 4, D (tanker), ☎ amend: 730622; insert: Marine Engineer (01382 541848).

Line 5, after SM, add: (01383 622444).

378, METHIL, lines 3/4, amend: ... infrastructure unsafe

378, PITTENWEEM, penultimate line (RH column), after P (tanker), add: ☎ 730622.

379, RIVER TAY, Chartlet, delete PHM buoy, *Fl.R.6s*, 4ca SSW of Royal Tay YC; delete PHM buoy, *Q.R.*, 7ca SSE of Royal Tay YC;



691, WEST TERSCHELLING, Telephone, Port HM amend 443337 (H24). Facilities, Marina Stichting Passantenhaven amend email address info@jachthaventerschelling.nl.

718, NIEUWPOORT, Navigation, line 7, remove *See notice boards for speed limits*, replace with *Speed limit 5kts in hbr*. Facilities, WSKLM, amend email address to info@wsklm.be; add CH; add H24.VVV-N amend berths to 1000. KYCN amend C capacity to 12 ton.

AREA 17, NORTH FRANCE

725, TROUVILLE TO COURSEILLES, OUISTREHAM and CAEN, St-Médard ✕ amend chrs to QR 7m 5M. Barnabé ✕ amend chrs to QG 7m 5M. Quilbé ✕ amend chrs to FI R 4s 9m 3M. Riva ✕ amend chrs to FI G 4s 9m 3M.

AREA 18, CENTRAL NORTH FRANCE

771, ST MALO TO ST QUAY-PORTRIEUX, ST CAST, line 6, Cap Fréhel, add reserve Lt range 15M.

771, ST MALO TO ST QUAY-PORTRIEUX, ST QUAY-PORTRIEUX, Île Harbour (Roches de Saint-Quay) ✕ amend to FI WRG 4s 16m, W9M, R/G 6M; 011°-R-133°-G-270°-R-306°-G-358°-W-011°; W twr & dwelling, R top; 48°39'·99N 02°48'·49W.

AREA 19, CHANNEL ISLANDS

793, OFFLYING ISLANDS, PLATEAU DES MINQUIERS, line 5, SW Minquiers, change *Whis* to *Bell*; amend position 48°54'·35N 02°19'·41W.

AREA 20, NORTH BRITANNY

818, PAIMPOL TO ÎLE DE BRÉHAT, L'Ost Pic ✕ amend chrs to WR 15s 20m, W9M, R6M;

AREA 21, SOUTH BRITANNY

856, CONCARNEAU TO ÎLE DE GROIX, Brigneau, line 4, add Rear beacon unlit.

AREA 22, SOUTH BISCAY

887, GIRONDE APPROACHES AND TO BORDEAUX, No. 6 ⚓ amend position to 45°38'·27N 01°18'·16W.

888, ANGLET and BAYONNE, line 19, Anglet Marine ent, amend chrs to FI G 2.5s 6m.

888, BIARRITZ, Pointe Saint-Martin, amend range to 27M.

AREA 23, NORTH & NORTH WEST SPAIN

918, BERMEO, line 5, N bkwr ✕ amend elevation to 16m.

AREA 24, PORTUGAL & THE AZORES

948, RIO MIÑO (SPANISH BORDER) TO LISBON, AVIERO, line 6, Idg Lt 065·6° Rear add elevation 15m, amend range 9M.

967, AZORES: SELECTED LIGHTS, ILHA TERCEIRA, Pta das Contendas amend ☆ FI (4) WR 15s 190m W23M to ☆ FI (4) WR 15s 53m W23M.

AREA 25, SOUTH WEST SPAIN, GIBRALTAR & MOROCCO

972, RIO GUADIANA TO SEVILLA, Baluarte, amend elevation to 2m.

579, COURTMACSHERRY, Telephone, substitute:

TELEPHONE (023) HM (Mob) 08610 40812; RNLI boathouse 8846600; Dr 8846186 (HN 1850 335999); Police 8846122; Coast Rescue Service (Mob) 08685 01806.

581, BALTIMORE, Shelter, last line, add: (see Adjacent Anchorages, Sherkin Island).

Adjacent Anchorages, Horseshoe Harbour, delete entry, substitute:

SHERKIN ISLAND on W side of harbour entrance. ⚓: Horseshoe Harbour (keep well to the W in narrow entrance; unlit); and off Castle ruins, 5ca N, where there are also some AB on pontoons (FW and electricity) belonging to nearby Islander's Rest Hotel.

583, BANTRY BAY, RH column, Lonehort Harbour, add: Be aware of Firing Practice Area to east of harbour entrance (full clear range procedure in force).

AREA 16, NETHERLANDS & BELGIUM


683, DEN HELDER TO AMSTERDAM, IJMUIDEN, Ldg Its 100·5° amend to (FW 5M by day; 090·5°-110·5°). Front ☆ F WR 30m W16M, R13M; 050°-W-122°-R-145°-W-160°; (Tidal and traffic sigs); dark R ○ twrs; 52°27'·70N 04°34'·47E. Rear ☆ FI 5s 52m 29M; 019°-199° (FW 4M by day; 090·5°-110·5°); 560m from front.

CORRECTIONS TO 2009 REEDS CHANNEL ALMANAC

REFERENCE DATA, WEATHER

15, WEATHER BY MOBILE PHONE, Marinecall SMS service has closed. Delete from 0.18 WEATHER BY MOBILE PHONE through to Channel Light Vessel. Note: Marinecall phone and fax services are unaffected.

AREA 1, SW ENGLAND


35, ISLES OF SCILLY, RH column, New Grimsby Sound, line 1, Appr (line E), amend: Appr (line G); line 5, HM , delete landline number (422849)

37, ST MARY'S, Facilities, line 2, delete:  423343; amend mobile : 07789 273626.

Line 5, 1.5-2.1m, amend: 1.5-2.7m.

Line 6, <13m, amend: <12m; <20m, amend: <18m.

Line 9, delete: (cans); ferry berth, amend: middle berth.

Line 14, , amend: 422665 (tickets).

40, FALMOUTH, R/T, lines 2/3, delete: Port Falmouth.

Facilities, Port Falmouth Marina, delete entry; substitute:

Port Falmouth Marina A new marina is planned between Queen's Jetty and Duchy Wharf; it may be open in 2010.

Ed Note: Work on this marina has not yet started; it unlikely to be open until at least 2010. The Empire Jetty and King's Jetty have been demolished but are now 'obstructions'. Keep well clear.

41, FALMOUTH, Chartlet, delete Port Falmouth Marina in old docks area. See Ed Note above.

48, POLPERRO, Facilities, line 4, after: ... moorings outside ent, add: (£10-£15 depending on size).

Ed Note: There are plans to make about 5 berths available in the inner harbour. However, from early 2009 the storm gates will be refurbished causing inevitable disruption. Contact HM (01503 272423) for current situation.

58, DARTMOUTH, Services, Dartside Quay, delete: SM; Town, insert: SM.

76, PORTLAND HARBOUR, Chartlet, insert *Fl.G.3s* light on the knuckle of the Sailing Academy breakwater (approx 50°34'42N 02°27'38W).

Portland Marina, line 4, , amend mob: 07977 586128.


AREA 2, CENTRAL S ENGLAND

82, CALSHOT REACH, line 2, Calshot Spit, 12m 11M, amend: 5m 10M (other details unchanged).

97, CHRISTCHURCH, Chartlet, amend light, *2FG*, at E edge of chartlet to: *Fl.G.2s*.

100, LYMINGTON, Navigation, line 5, 1.1m, amend: 1.7m.

Facilities, before Marinas, insert: HM Office between Royal Lymington YC and Lymington Town SC.

Town Quay, line 1, amend: public pontoon, AB and many  £12.50/craft ... ; line 2, amend: ... WCs and showers, slip

After Town Quay, add: 5 scrubbling grids (see HM).

AREA 3, SE ENGLAND

138, NEWHAVEN, Main chartlet, insert new light, *Fl.G.5s*, on N end of old gridiron at Car Ferry Terminal just below swing bridge; delete light, *3FR(vert)*, at N end of marina; insert light, *2FR(vert)*, at end of jetty close SE of water tap symbol.

Shelter, line 4, (mostly dredged to 2m), amend: (mostly dredged to 1m).

Navigation, lines 2/3, delete: Ferries/cargo ... across the hbr.

142, DOVER, Navigation, last line, delete: Beware high speed ... Wales pier.

Facilities, last line, add: also to Dieppe (6/week).

AREA 4, NORTHERN FRANCE

151, TROUVILLE TO COURSEILLES, OUISTREHAM and CAEN, St-Médard ✕ amend chars to QR 7m 5M. Barnabé ✕ amend chars to QG 7m 5M. Quilbé ✕ amend chars to Fl R 4s 9m 3M. Riva ✕ amend chars to Fl G 4s 9m 3M.

AREA 5, CENTRAL NORTHERN FRANCE

195, ST MALO TO ST QUAY-PORTRIEUX, ST CAST, line 6, Cap Fréhel, add reserve lt range 15M.

195, ST MALO TO ST QUAY-PORTRIEUX, ST QUAY-PORTRIEUX, Île Harbour (Roches de Saint-Quay) ✕ amend to Fl WRG 4s 16m, W9M, R/G 6M; 011°-R-133°-G-270°-R-306°-G-358°-W-011°; W twr & dwelling, R top; 48°39'99N 02°48'49W.

AREA 6, CHANNEL ISLANDS

217, OFFLYING ISLANDS, PLATEAU DES MINQUIERS, line 5, SW Minquiers, change *Whis* to *Bell*; amend position 48°54'35N 02°19'41W.

AREA 7, NORTH BRITANNY

240, PAIMPOL TO ÎLE DE BRÉHAT, L'Ost Pic ✕ amend chars to WR 15s 20m, W9M, R6M;

CORRECTIONS TO 2009 REEDS EASTERN ALMANAC

REFERENCE DATA, WEATHER

12, WEATHER BY MOBILE PHONE, Marinecall SMS service has closed. Delete from 0.14 WEATHER BY MOBILE PHONE through to Wick on page 13. Note: Marinecall phone and fax services are unaffected and figs 0(4) and 0(5) remain.

AREA 1, E ENGLAND

30, APPROACHES to THAMES ESTUARY, line 7, NE Spit, add: **Racon (T) 10M**.

30, PRINCES CHANNEL, line 1, Outer Tongue, delete entry (buoy discontinued).

42, RIVER MEDWAY, RH column, Yacht Clubs, ☎s (all code 01634) amend: Hoo Ness YC: 250052; Hundred of Hoo SC: 250102; RNSA: 200970.

46, THAMES TIDAL BARRIER, Testing, maintenance closures from May to Oct 2009 will be:

Fri 8 May 0815-1040

Tue 9 Jun 0910-1140

Thu 9 Jul 0935-1205

Thu 6 Aug 0840-1110

Mon 7 Sep 1010-1240

Sun 4 Oct 0825-1825

Note: Times may vary by up to one hour.

Ed Note: See January Update for earlier closures.

48, RIVER THAMES, Facilities, Greenwich YC, ☎, amend: 0844 736 5846.

61, RIVER COLNE, Chartlet, [paste in chartlet on page 3](#) showing a new PHM buoy (S of No 24), and removal of sector lights, fuel and water facilities in the upper reaches.

Ed Note: The slipways at Brightlingsea (eastern of the 2 slips; see inset chartlet) and at Wivenhoe are privately owned. A new 50-berth private marina has been constructed near the Town Jetty. More details when known.

68, RIVER STOUR, Telephone, Police, amend: 0300 3334444.

Facilities, last paragraph (Mistley and Manningtree), substitute:

MANNINGTREE, AB (drying), FW. **Stour SC** ☎ (01206) 393924, M (drying but free), FW, Bar, showers. **Town P & D** (cans), ☎, Gas.

69, RIVER ORWELL, Telephone, line 1, Orwell Navigation Service, amend: 211066.

Facilities, Pin Mill, delete: HM ☎ 780621 ... 260568; substitute: King's Boatyard ☎ 780256 M (£6.50/night). Fox's Marina, SM, delete: ☎ 659878.

AREA 2, NETHERLANDS & BELGIUM

83, DEN HELDER TO AMSTERDAM, IJMUIDEN, Ldg lts 100-5° amend to (FW 5M by day; 090-5°-110-5°). **Front** ☆ F WR 30m **W16M**, R13M; 050°-W-122°-R-145°-W-160°; (Tidal and traffic sigs); dark R ○ twrs; 52°27'·70N 04°34'·47E. **Rear** ☆ Fl 5s 52m **29M**; 019°-199° (FW 4M by day; 090-5°-110-5°); 560m from front.

93, WEST TERSCHELLING, Telephone, Port HM amend 443337 (H24). Facilities, Marina Stichting Passantenhaven amend email address info@jachthavenschelling.nl.

120, NIEUWPOORT, Navigation, line 7, remove *See notice boards for speed limits*, replace with *Speed limit 5kts in hbr*. Facilities, WSKLM, amend email address to info@wsklm.be; add CH; add H24.VVW-N amend berths to 1000. KYCN amend C capacity to 12 ton.

AREA 3, NE ENGLAND

130, KING'S LYNN AND WISBECH, RH chartlet, Lynn Cut, east side, amend *Low Cut: Q.R.*

131, BOSTON, Shelter, lines 4/5, delete: Moorings may ... fixed bridge.

Adjacent Harbours, River Welland, lines 8/9, delete: Also at Fosdyke ... stbd side.

140, WHITBY, Chartlet, [substitute chartlet on page 4](#) which includes new pontoons off the fish pier and at Whitby Marina.

142, SEAHAM, Shelter, lines 2-5, amend: Small craft normally berth in North Dock, which dries and is under development. Shelter is variable and dock can be subject to considerable swell. South Dock is not usually available to non-commercial vessels.

Ed Note: See also Jan Update re new marina at Seaham.

Lights and Marks, line 3, delete: (often shows FG in bad weather).

R/T, times, amend: 0800-1700 (Mon-Fri).

Telephone, amend: (Code 0191) HM 07786 565205; Admin Office 5161700; ... Police 0345 6060365; Dr 5812332.

AREA 4, SE SCOTLAND

158, EYEMOUTH, Facilities, lines 2/3, delete: D (see HM ... P (cans); substitute: D (in Gunsgreen Basin).

Lines 4/5, delete: Gunsgreen House ... domestic facilities.

Web address, amend: www.eyemouthharbour.org.

Chartlet, insert ⚡ (diesel fuel pump) on Gunsgreen Basin breakwater, next to ⚓ (fishing harbour symbol).

159, DUNBAR, Facilities, lines 1/2, D (delivery), amend: D (quayside).

159, NORTH BERWICK, line 10, HM Mob, amend: 07776 467373.

167, ANSTRUTHER, Telephone, line 2, Police, amend: 08456 005702.

Facilities, line 4, D (tanker), ☎ amend: 730622; insert: Marine Engineer (01382 541848).

Line 5, after SM, add: (01383 622444).

168, METHIL, lines 3/4, amend: ... infrastructure unsafe

168, PITTENWEEM, penultimate line (RH column), after P (tanker), add: ☎ 730622.

169, RIVER TAY, Chartlet, delete PHM buoy, *Fl.R.6s*, 4ca SSW of Royal Tay YC; delete PHM buoy, *Q.R.*, 7ca SSE of Royal Tay YC; insert new PHM buoy, *Q.R.*, at 56°27'·65N 02°53'·93W (5-5ca SSW of Royal Tay YC).

171, GOURDON, Line 10, after W pier light details, add: Essential to keep in W sector until R Ldg Lts are aligned.

Last 2 lines, delete: Fish market ... and 1530.

AREA 5, NE SCOTLAND

182, PORTSOY and FINDOCHTY, line 1, Portsoy Pier Ldg Lts, amend: 173°, Front Fl G 4s 20m 3M; post; 57°41'·09N 02°41'·40W; Rear Q G 22m 3M; R △ on BW post.

184, EAST YELL, UNST and BALTA SOUND, line 1, Whitehill, amend sectors: shore-W-163°-R-211°-W-352°-R-shore.

186, PORTSOY, lines 4/5, amend: Ldg lts 173°, front Fl G 4s 20m 3M, metal post; rear Q G 22m 3M, R △ on BW post.

200, SOUTH RONALDSAY/BURRAY, St Margaret's Hope, line 2, add: Ldg Lts, F G, 174°.

CORRECTIONS TO 2009 REEDS WESTERN ALMANAC

REFERENCE DATA, WEATHER

13, WEATHER BY MOBILE PHONE, Marinecall SMS service has closed. Delete from 0.14 WEATHER BY MOBILE PHONE through to Lough Foyle. Note: Marinecall phone and fax services are unaffected and figs 0(5) and 0(6) remain.

AREA 1, NW SCOTLAND

38, ACAIRSEID MHÓR, line 6, add: Poss AB on pontoon.

39, KINLOCHBERVIE, Shelter, lines 3/4, amend: ... yachts AB on pontoons (contact HM for details); NE side is ...

Telephone, HM mob, amend: 07901 514350.

39, LOCH INVER, lines 8-10, amend: A 22-berth marina is between the breakwater (QG) and the first FV pier.

Last 2 lines (RH col), amend: VHF Ch 12 16. HM ☎ 01571 844247; mob 07958 734610; Health Centre 01571 844452. **Facilities:** FW, P, D, ☑, showers (Leisure Centre), CH, ☎, ☒, Gas.

40, ULLAPOOL, Shelter, lines 1-3, amend: A commercial port but yachts welcome. Good ⚓ E of pier, 8 ⚓ or possible AB on pier (consult HM). Loch Kanaird ...

R/T, amend: *Ullapool Harbour* Ch 14 16 (H24).

Telephone, HM, amend: 612724, mob 07734 004843; add: Dr 08454 242424.

Facilities, line 1, amend: Pier D, FW, CH; ...

40, LOCH KANAIRD, lines 4-6, amend: Good ⚓s (tripping line recommended) ENE of Sgeir Mhor or E of Isle Martin, N of Rubha Beag (also AB on pontoon).

56, DUNSTAFFNAGE, Oban, *Ed Note: 15 ⚓s have been laid in the N part of Cardingmill Bay, and there is a short-stay landing pontoon close to the Sailing Club. More details when known.*

59, LOCH CRAIGNISH, Facilities, line 1, amend: (87+20 AB; 80+12 ⚓).

AREA 2, SW SCOTLAND

66, PORT ELLEN and LOCH INDAAL, line 3, Rubh'an Dùin, amend sectors: shore-R-218°-W-249°-R-350°-W-shore.

Ed Note: See also amendment in Jan Update.

71, TARBERT, LOCH FYNE, Shelter, lines 2/3, amend: 120 ⚓ AB on pontoons; only use Fish Quay if directed by HM.

Chartlet, [paste in new chartlet on page 4](#) showing new pontoon layout.

75, LOCH RANZA, line 5, 5 ⚓s, amend: 12 ⚓s. Lines 6/7, Pontoon planned (2008), substitute: Dinghy landing pontoon at Lochranza.

90, LOCH RYAN/STRANRAER, Chartlet, insert SWM buoy, *Iso.4s*, on NE corner of prohibited anchoring area, 54°59'·8N 05°03'·8W (east of Jamieson's Point, west of White House).

AREA 3, NW ENGLAND

95, AREA MAP, *Ed Note: A new TSS is to be established, on 1 Jul 09, in Liverpool Bay centred on 53°32'·26N 03°36'·7W. The TSS is orientated E/W and is approx 4.6M wide and 6M long. See Admiralty NTM 691(P)09 for more details.*

107, RIVER RIBBLE/PRESTON, Facilities, line 3, amend: ... 0700-2100 Apr-Sep (Oct-Mar by arrangement with 24Hrs notice).

AREA 4, S WALES AND BRISTOL CHANNEL

127, BRISTOL DEEP, line 5, Welsh Hook, delete: *Bell*.

132, PORT CARDIGAN, lines 3-5, amend; ... N/NW winds. Large scale charts are essential; see www.afon-teifi-fairways.com for up-to-date advice or telephone Mooring Master (see below) before entering. The bar has 0.5m or less. ⚓ near hotel ...

150, BRISTOL, Facilities, Bristol Marina, line 2, amend: ... 100 AB, inc about 5 ⚓ (20m max LOA)...

151, PORTISHEAD, Facilities, line 2, web address, amend: www.quaymarinas.com.

156, NEWQUAY, line 7, HM ☎, amend mob: 07737 387217.

AREA 5, S IRELAND

165, MALAHIDE, Navigation, line 1, lat/long, amend: 53°27'·12N 06°06'·87W.

167, DUBLIN, Chartlet, delete *Fl.6s* light on north side of harbour near the RoRo terminals.

178, YOUGHAL, Shelter, line 2, add: Seasonal short-stay pontoon (with FW) off landing jetty.

Chartlet, insert Y SPM bcn, *Fl.Y.5s2M*, at 51°57'·74N 07°50'·63W (SW of Red Bank). *Ed Note: This marks a 5m dinghy pontoon.*

185, COURTMACSHERRY, Telephone, substitute:

TELEPHONE (023) HM (Mob) 08610 40812; RNLI boathouse 8846600; Dr 8846186 (HN 1850 335999); Police 8846122; Coast Rescue Service (Mob) 08685 01806.

187, BALTIMORE, Shelter, last line, add: (see Adjacent Anchorages, Sherkin Island).

Adjacent Anchorages, Horseshoe Harbour, delete entry, substitute:

SHERKIN ISLAND on W side of harbour entrance. ⚓s: Horseshoe Harbour (keep well to the W in narrow entrance; unlit); and off Castle ruins, Sca N, where there are also some AB on pontoons (FW and electricity) belonging to nearby Islander's Rest Hotel.

189, BANTRY BAY, RH column, Lonehort Harbour, add: Be aware of Firing Practice Area to east of harbour entrance (full clear range procedure in force).

CORRECTIONS TO 2009 REEDS PBO SMALL CRAFT ALMANAC

CHAPTER 1, NAVIGATION

16, SOUTHAMPTON WATER/RIVER HAMBLE, line 1, Calshot Spit, 12m 11M, amend: 5m 10M (other details unchanged).

20, THAMES ESTUARY, OUTER APPROACHES, line 4, NE Spit, add: Racon(T) 10M.

20, PRINCES CHANNEL/MEDWAY/SEA REACH, line 1, Outer Tongue, delete entry (buoy discontinued).

25, WHITEHILLS/PORTSOY/FINDOCHTY, lines 3/4, Portsoy Pier Ldg Lts, amend: 173°, Front Fl G 4s 20m 3M; post; 57°41'·09N 02°41'·40W; Rear Q G 22m 3M; R Δ on BW post.

35, BRISTOL DEEP, line 6, Welsh Hook, delete: *Bell*.

44, IJMUIDEN TO STELLENDAM, IJMUIDEN, Ldg Lts 100·5° amend to (FW 5M by day; 090·5°-110·5°). Front \star F WR 30m **W16M**, R13M; 050°-W-122°-R-145°-W-160°; (Tidal and traffic sigs); dark R \circ twrs; 52°27'·70N 04°34'·47E. Rear \star Fl 5s 52m **29M**; 019°-199° (FW 4M by day; 090·5°-110·5°); 560m from front.

48, ST MALO TO ST QUAY-PORTRIEUX, ST CAST, line 6, Cap Fréhel, add reserve Lt range 15M.

48, ST MALO TO ST QUAY-PORTRIEUX, ST QUAY-PORTRIEUX, île Harbour (Roches de Saint-Quay) \sphericalangle amend to Fl WRG 4s 16m, W9M, R/G 6M; 011°-R-133°-G-270°-R-306°-G-358°-W-011°; 48°39'·99N 02°48'·49W.

51, PAIMPOL TO L'ABERWRAC'H, L'Ost Pic \sphericalangle amend chars to WR 15s 20m, W9M, R6M;

54, RIVER GIRONDE TO THE SPANISH BORDER, ANGLET/BAYONNE, line 5, Anglet Marina ent, amend chars to Fl G 2·5s 6m.

59, RIO MIÑO (SPANISH BORDER) TO LISBON, AVIERO, line 5, ldg Lt 065·6° Rear add elevation 15m, amend range 9M.

61, AZORES: SELECTED LIGHTS, ILHA TERCEIRA, Pta das Contendas amend \star to Fl (4) WR 15s 53m W23M.

CHAPTER 2, WEATHER

78, WEATHER BY MOBILE PHONE, Marinecall SMS service has closed. Delete from WEATHER BY MOBILE PHONE through to Jersey on page 79. Note: Marinecall phone and fax services are unaffected.

CHAPTER 3, COMMUNICATIONS

102, ISLES OF SCILLY, Tresco, delete landline number (422849).

103, RIVERS STOUR AND ORWELL, line 3, delete: Ipswich Port Radio (for R Orwell); substitute: Orwell Navigation Service.

106, SEAHAM, times, amend: M-F 0800-1700.

106, OUTER HEBRIDES, Loch Inver, ☎ amend: 01571 844247.

107, ULLAPOOL, ☎ amend: 01854 612724.

108, COURTMACSHERRY, amend: HM ☎ 08610 40812.