



Corrections for May 2009
with the compliments of Adlard Coles Nautical



Nautical Almanac 2009
Channel Almanac 2009
Eastern Almanac 2009
Western Almanac 2009

Reeds PBO Small Craft Almanac 2009

Corrections to 7th May 2009 include Admiralty Notices to Mariners Week 19

EDITORIAL NOTES

1. Corrections to the above Almanacs are placed on www.reedsalmanac.co.uk at the following intervals: In early January (covering the period since going to press in June); and thereafter at the start of each month from February through to June. There is no repetition, except where an earlier correction is modified by later data.
2. We thank those who have contributed helpful suggestions, all of which are considered and, if feasible, included. Please tell the Editors as soon as possible of any corrections to the Almanac(s) thought to be necessary, particularly as a result of experience at sea. Our e-mail address is info@reedsalmanacs.co.uk

3. Contents

Pages

- 2-5 Reeds Nautical Almanac**
- 6 Reeds Channel Almanac**
- 7 Reeds Eastern Almanac**
- 7 Reeds Western Almanac**
- 7 Reeds PBO Small Craft Almanac.**

Adlard Coles Nautical
A&C Black Publishers Ltd
36 Soho Square
London, W1D 3QY

Tel 0207 758 0200
Fax 0207 758 0222
www.reedsalmanac.co.uk

CORRECTIONS TO 2009 REEDS NAUTICAL ALMANAC

CHAPTER 1, REFERENCE DATA

10, Useful Addresses, Lloyd's Register, psg-general@lr.org, amend: marine@lr.org. **National Imports Relief Unit**, ☎ 028 6632 2298, amend: 02866 321225. enquiries.niru.rbs@hmce.gsi.gov.uk, amend: enquiries.niru.rbs@hmrc.gsi.gov.uk. **Port of London Authority (PLA)**, add: www.pla.co.uk. **Royal Institute of Naval Architects**, Belgrave St, amend: Belgrave St.

11, Useful Addresses, Dienst der Kust Havens-Hydrografie, rename: **Vlaamse Hydrografie**, add: www.vlaamsehydrografie.be, add: kust@vlaanderen.be. **Royal Ocean Racing Club (RORC)**, info@org.uk, amend: info@rorc.org.uk. **Royal Yachting Association (Scotland)**, add: admin@ryascotland.org.uk. **Søfartsstyrelsen**, add: (Danish Maritime Authority); add: www.dma.dk; add: dma@dma.dk. **The Stationery Office**, www.tso.co.uk, amend: www.tso.co.uk, customer.services@co.uk, amend: customer.services@tso.co.uk

12, Useful Addresses, Instituto Hidrografico de la Marina, ihmesp@retemail.es, amend: orpflota@fn.mde.es. **Service Hydrographique et Océanographique de la Marine**, BP 30316, 29603 Brest Cedex amend: CS 92803, 29228 Brest Cedex 2. ☎ +33 2 98 03 09 17. ✉ +33 2 98 47 11 42

CHAPTER 2, REGULATIONS

25, Foreign Customs, first para, end, add para: **Diesel**: Keep receipts for red diesel bought in the UK and stored in main fuel tank (marked "duty paid" if possible); also log engine hours. *Ed Note: New regulations affect the purchasing of red diesel in the UK. It is quite legal to use in other EU states, subject to the above, but diesel stored in cans may attract taxation or penalty according to local rules.*

CHAPTER 8, FIRST AID

134, ACUTE (SUDDEN) ILLNESS, Stroke, Substitute:

Stroke Sudden unconsciousness, paralysis or weakness on one side of body, slurring of speech. Recognise a stroke by asking the victim to:

- Smile
- Speak
- Raise both arms
- Stick out tongue

If there is difficulty with *any one* of these tasks, or if the tongue goes to one side or the other, suspect a stroke.

Place in recovery position and check airway.

Urgent help needed - specialist treatment within 3 hours can reverse the effects of a stroke.

CHAPTER 9, HARBOURS, COASTS AND TIDES

AREA 1, SW ENGLAND

197, PORTLAND HARBOUR, Chartlet, delete light on Wellworthy Bcn (50°35'·3N 02°27'·8W).

AREA 2, CENTRAL S ENGLAND

241, RIVER HAMBLE, Chartlet, light, *Fl.G.4s*, close S of Solar Marina (approx 50°52'·37N 01°18'·5W), amend: Q.G.

Insert light, Q.G. (same symbol as above) at 50°52'·7N 01°17'·9W (E side of the river opposite Q.R light S of Swanwick Marina). Both bcns have tide gauges.

AREA 3, SE ENGLAND

260, SELSEY BILL and THE OWERS, lines 5/6, Owers, delete: *Whis*; substitute: *Bell*. Lat/long, amend: 50°38'·59N 00°41'·09W.

267, BRIGHTON, Facilities, Brighton Marina, (1300 + 200 visitors), amend: (1600 inc ♀); line 2, £6.50 for < 4 hrs, substitute: short stay prices on application; line 4, delete: LPG.

Chartlet, delete the waiting pontoon on the east side of the marina.

AREA 4, E ENGLAND

285, BLACK DEEP, line 11, No. 3, lat/long, amend: 51°42'·41N 01°26'·48E.

294, RIVER MEDWAY, Main chartlet, delete Bn No5 on Nor Marsh (51°23'·8N 00°35'·8E); delete associated leading line, 096·5°.

322, RIVER ORWELL, Facilities, King's Boatyard ☎, amend: 780258. *Ed Note: This corrects the amendment in the Mar Update.*

323, RIVER ORE/ALDE, Navigation, lines 1/2, amend: WPT Orford Haven SWM buoy, 52°01'·62N 01°28'·00E, may be moved as required. For latest

Line 4, amend: Chartlet (next page) is based on surveys carried out in 2009, but

329, GREAT YARMOUTH, Chartlet, insert lights at entrance to Outer Harbour: Q.G at N entrance (52°34'·71N 01°44'·74E); Q.R at S entrance (52°34'·60N 01°44'·73E).

Ed Note: The new Outer Harbour is shown on the amended chartlet on Page 5 of the Apr Update.

AREA 5, NE ENGLAND

340, KING'S LYNN AND WISBECH, RH chartlet, insert: *Bn D, Fl.Y.10s*, at Y Bn SSE of No 25 SHM buoy.

347, RIVER HUMBER, Chartlet. *Ed Note: Changing depths have been reported east of the Humber Bridge. Buoyage is frequently adjusted.*

351, HARTLEPOOL, Telephone, MRCC, amend: 01262 672317.

352, SEAHAM, Telephone, MRCC, amend: 01262 672317.

353, R TYNE/NORTH SHIELDS, Telephone, MRCC, amend: 01262 672317.

357, BLYTH, Telephone, MRCC, amend: 01262 672317.

360, HOLY ISLAND, Telephone, CG, amend: MRCC 01262 672317.

AREA 6, SE SCOTLAND

366, PORT SETON, COCKENZIE etc, line 7, Craigh Waugh, amend: † [IDM buoy] Fl (2) 10s (position unchanged).

367, KIRKCALDY and METHIL, line 3, Kirkcaldy Wreck, delete entry.

373, FORTH AND CLYDE CANAL, *Ed Note: The repairs at Lock 36 are now complete and the canal is open (Apr Update refers).*

AREA 7, NE SCOTLAND

400, INVERNESS, Facilities, line 3, 2.5m, amend: 3m.

403, WICK, Facilities, a new 70-berth marina is being developed in the Inner harbour; it should be available for the 2009 sailing season. More details when known.

AREA 8, NW SCOTLAND

426, OBAN TO LOCH CRAIGNISH, line 4, Bono Rock, amend: † Q (9) 15s; 56°16'·21N 05°41'·22W.

AREA 9, SW SCOTLAND

469, KAMES BAY, lines 3/4, amend: ... AB in marina, 55 inc ♀, £1.85/m, on S side of bay at Port Bannatyne.

Ed Note: This small marina is almost complete and should be fully operational within a few weeks.

AREA 10, NW ENGLAND

498, FLEETWOOD, Shelter, line 1, Fleetwood Village Marina, substitute: Fleetwood Haven Marina.

Navigation, delete entry, substitute:

NAVIGATION WPT 53°57'·67N 03°02'·05W, Fairway NCM buoy, Q, 134°/3ca to No 3 SHM buoy, VQ.G. Ideally arrive at WPT about HW-1½ if bound for the marina, 3M up river, which can be entered HW±2. Freeflow access through lock approx HW±1½ except some neap tides.

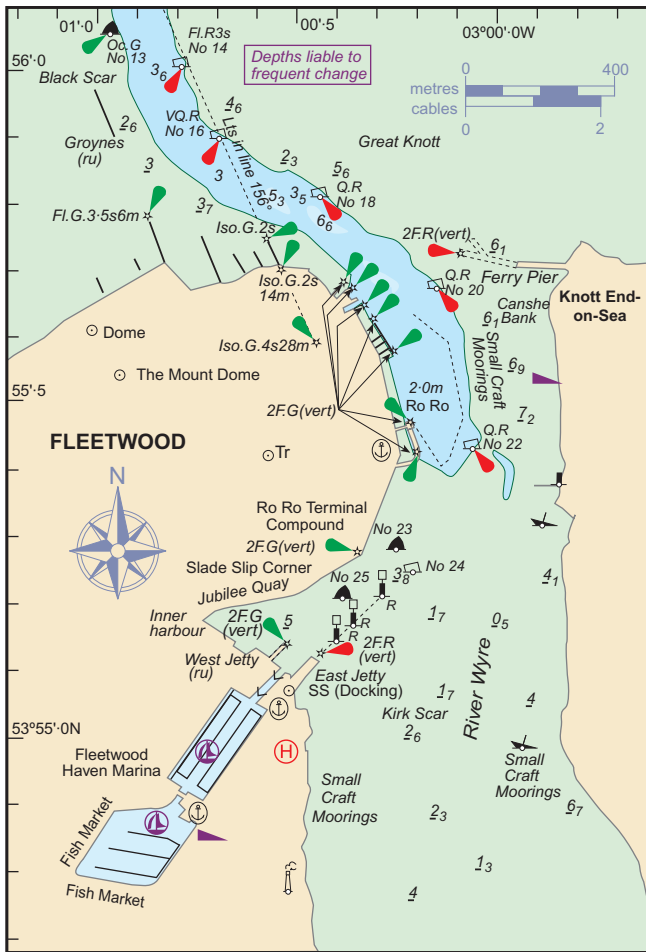
Beware ships entering/leaving harbour or swinging in vicinity of the river berths. A revolving Y light at the ro-ro berth indicates a large vessel is moving.

Nos 23 SHM and 24 PHM buoys mark start of Dock Channel, dredged to drying height of 3m. Call Fleetwood Dock Radio before entering channel (see R/T below).

R/T, line 2, amend: *Fleetwood Dock Radio*

Facilities, line 1, amend: **Fleetwood Haven Marina** 420 inc ♀ (max 20m LOA) in two basins, ☎ 879062 ... ; add: BH (75 ton).

Chartlet, *substitute attached chartlet at top of next page* showing a new light on Ferry Pier and an extension to the (renamed) Haven Marina.



AREA 11, S WALES AND BRISTOL CHANNEL

520, MILFORD HAVEN, RH column, penultimate line, ODAS. *Ed Note: There is now a second ODAS buoy approx 3ca SE of the one listed. Both buoys will be in place until trials are complete.*

538, CARDIFF, Facilities, add:

Cardiff Marina 343459, www.cardiffmarina.com, 320 inc 50 welcome, £1.60, Wi-fi (free), D, ɀ, C (4.5 ton), ɀ (short walk). RH chartlet, LH edge, Cambrian Marina, substitute: Cardiff Marina.

AREA 13, N IRELAND

605, BELFAST LOUGH, Chartlet of Bangor, N Breakwater head, amend range of light (Iso.R.12s): 9M.

AREA 14, WEST DENMARK

628, HORNS REV (marks westward from coast), Wind farm in ɀ, line 4, 15s 15m 5M, amend: 15s 9m 5M.

635, Fig 14(1), mast at 55°29'21N 07°54'73E, 15s 15m 5M, amend: 15s 9m 5M.

AREA 15, GERMANY

666, Terschelling-German Bight TSS, Fig 9.15.15A, *paste in attached chartlet on below; shows buoyage changes in the TSS.*

AREA 16, NETHERLANDS & BELGIUM

683, APPROACHES TO HOEK VAN HOLLAND, line 8, Maas Center ɀ, amend: Maas Centre ɀ. 52°01'11N 03°53'44E, amend: 52°00'92N 03°48'79E. Add new line following: SB ɀ Fl(4)Y 10s; **Racon Z**; 51°59'8N 3°54'6E.

686, SPECIAL NOTES: NETHERLANDS, insert para before Marinas: **REGULATIONS** Discharge of toilet waste from recreational boats is forbidden in all Dutch waters, including inland waterways, lakes and the Waddenzee. *Ed Note: read more at www.vuilwater.info/files/folder_toilet_waste.pdf.*

704, HOEK VAN HOLLAND, chartlet, delete: WC Maersk WCM.

AREA 17, NORTH FRANCE

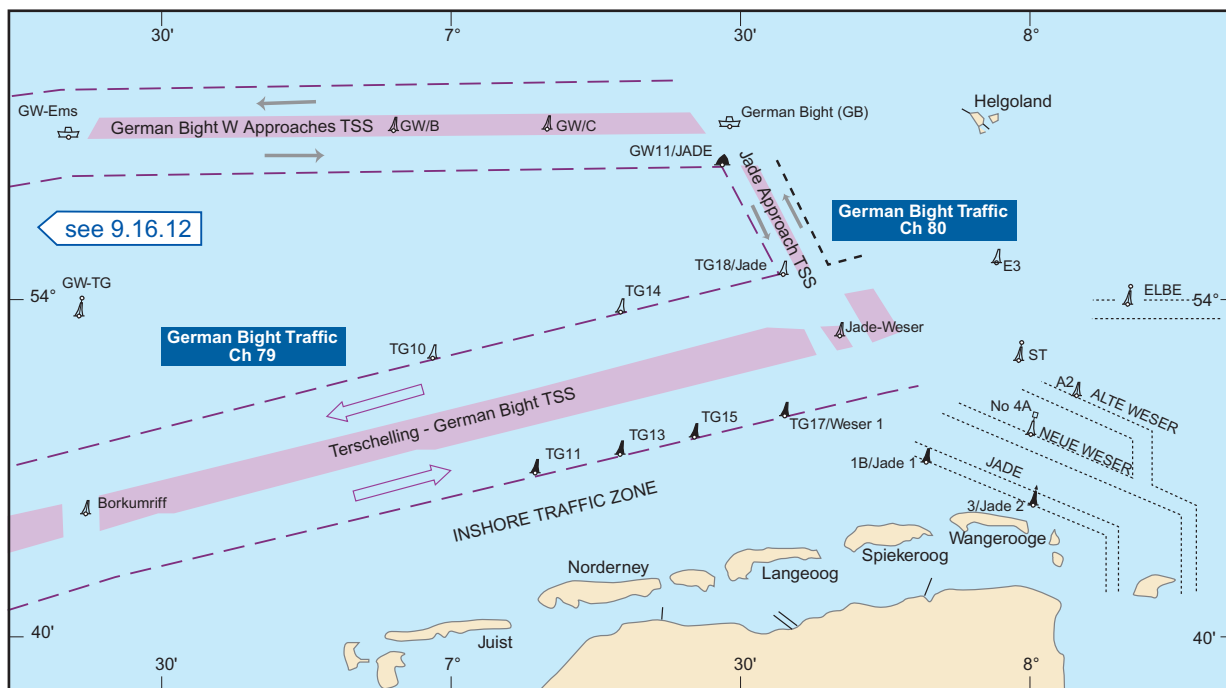
725, FÉCAMP, N Jetty ☆, delete from: Horn(2) ... +2;.

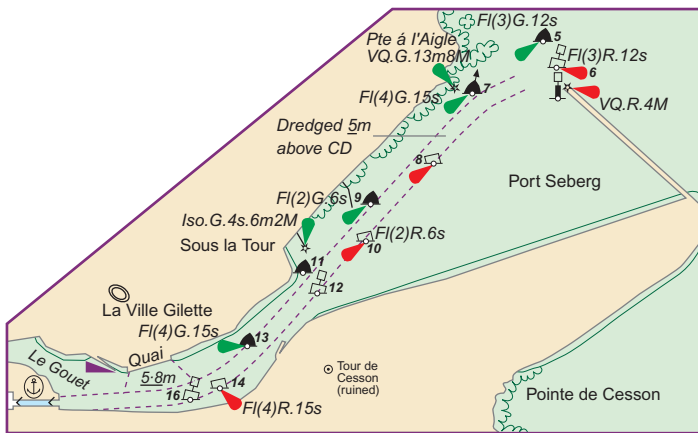
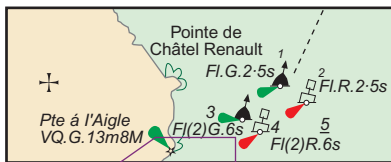
732, DUNKERQUE, chartlet, ☆ on S side of Avant Port East (51°03.25'N 2°21.20'E), Fl(3)15s, amend: Q.

743, FÉCAMP, chartlet, ☆ Fl(2)10s15m16M (on N breakwater at entrance), delete: Horn(2)30s.

AREA 18, CENTRAL NORTH FRANCE

Ed Note: New AC 2029 (1:48:800) is an important replacement for AC 3674, that includes a 1:10,000 plan of St Brieuc Le Légué. New AC 2028 (France North – Coast, île de Bréhat to Plateau des Roches Douvres) will be a useful addition to coverage in the West of this area. It is based on French chart 7152 at 1:48,600. Neither of these new charts are available in ARCS.





771, LE LÉGUÉ, lines 5-end;

- 1 bis, amend: 3;
- 2 bis, amend: 4;
- 2 ter, amend: 6;
- 3, amend: 5;
- 4, amend: 8;
- 5, amend: 7;
- 6, amend: 10;
- 7, amend: 9;
- 9, amend: 11;
- 10, amend: 14;
- 11, amend: 13.

776, PASSAGE INFORMATION, ST MALO TO L'OST PIC AND BEYOND, line 1, (AC 3674), amend: (AC 2028, 2029).

784, ERQUY, line 2, 3674, amend: 2029.

784, DAHOUE, Charts, 3674, amend: 2029.

784, LE LÉGUÉ, Charts, 3674, amend: 2029.

785, BINIC, Charts, 3674, amend: 2029.

786, ST QUAY-PORTRIEUX, Charts, 3674, amend: 2029.

786, LE LÉGUÉ, *paste in attached chartlets above; shows new numbering of the approach buoyage.*

AREA 20, NORTH BRITANNY

Ed Note: New AC 2027 (1:48,700) is an important replacement for AC 3670.

New AC 2028 (France North – Coast, Île de Bréhat to Plateau des Roches Douvres) will be a useful addition to coverage in the East of this area. It is based on French chart 7152 at 1:48,600.

Neither of these new charts are available in ARCS.

821, LE GUILVINEC, line 7, Spineg delete: Whis;.

821, PASSAGE INFORMATION, NORTH BRITANNY, line 1, (AC 2668, 2644, 2643), amend: (AC 2668, 2644, 2643, 2028).

822, PASSAGE INFORMATION, PAIMPOL TO PLOUMANAC'H, line 4, AC 3670, amend: AC 2027; add: 2028.

822, PASSAGE INFORMATION, LES SEPT ÎLES TO BAIE DE MORLIAUX, line 1, AC 3670, amend: AC 2027.

822, LES SEPT ÎLES TO BAIE DE MORLIAUX, line 1, (AC 3669), amend: (AC 2026).

822, ÎLE DE BATZ TO LE FOUR, 2nd para, line 4, (AC 3669, 3668), amend: (AC 2026, 2025).

823, PAIMPOL, Charts, 3670, amend: 2027; add: 2028.

823, ÎLE DE BRÉHAT, Charts, 3670, amend: 2027; add: 2028.

825, LÉZARDRIEUX, Charts, 3670, amend: 2027; add: 2028.
Lower chartlet, add: 1_s at 48°47'329N 3°05'970W. Add: 1_{Wk} at 48°47'456N 3°05'636W.



826, TRÉGUIER, Charts, 3670, amend: 2027; add: 2028.

827, PORT BLANC, Charts, 3670, amend: 2027.

827, PERROS-GUIREC, Charts, 3670, amend: 2027.

828, PERROS-GUIREC, chartlet, Gommonéou PHM, add R light flare. *Ed Note: This was omitted from the April update.*

829, LES SEPT ÎLES, line 1, AC 3669, amend: AC 2026; line 2, 3670, amend: 2027.

829, PLOUMANAC'H, Charts, 3669, amend: 2026; 3670, amend: 2027.

829, TRÉGASTEL PLAG, line 2, 3669, amend: 2026; line 2, 3670, amend: 2027.

830, TRÉBUERDEN, Charts, 3669, amend: 2026.

830, LANNION (Léguer River), Charts, 3669, amend: 2026.

831, LOCQUÉMEAU, line 2, 3669, amend: 2026. LOCQUIREC, line 1, 3669, amend: 2026.

831, PRIMEL TRÉGASTEL, Charts, 3669, amend: 2026.

832, ROSCOFF, Charts, 3669, amend: 2026.

832, MORLAIX, Charts, 3669, amend: 2026.

833, ÎLE DE BATZ, line 2, AC 3668, amend; AC 2025.

833, MOGUÉRIEC, line 1, 3668, amend; 2025.

833, BRIGNOGAN, line 2, AC 3668, amend; AC 2025.

834, L'ABER WRAC'H, Charts, AC 3668, amend; AC 2025.

835, L'ABER BENOIT, Charts, AC 3668, amend; AC 2025.

835, L'ABERILDUT, Charts, AC 2644, amend; AC 2647.

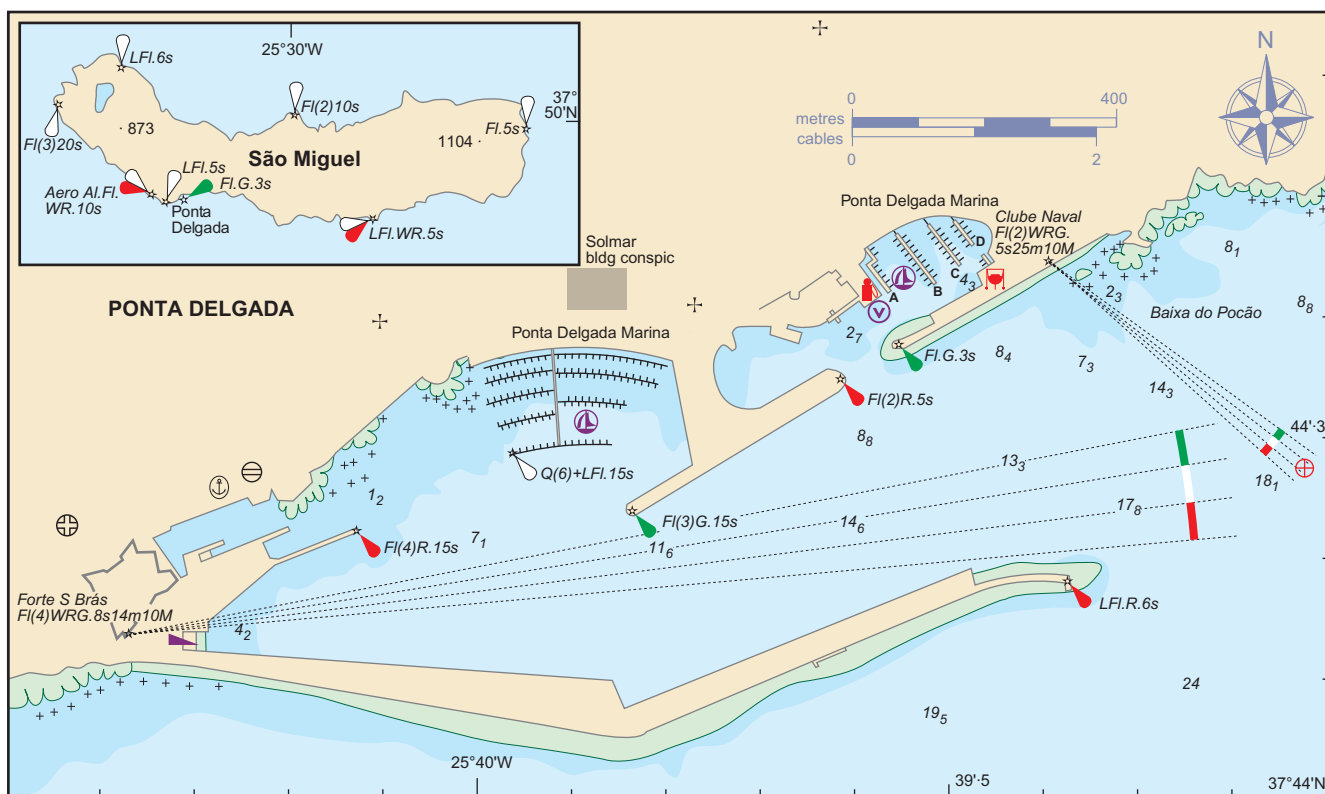
846, BREST, *paste in attached chartlet above right, showing changes to the arrangement of this new marina.*

AREA 21, SOUTH BRITANNY

856, LOCTUDY TO CONCARNEAU, line 4, Bilien delete: Whis;.

863, CONCARNEAU, chartlet, Men Fall , FI.G.4s, amend: FI(2)G.6s.

867, LORIENT, Chartlet, Dir \star Iso WRG at Pont Gueydon, delete I, flares and assoc chars.



AREA 23, NORTH & NORTH WEST SPAIN

919, LASTRES, line 4, Tazones ☆, 24-94'W, amend: 23-94'W.

919, CABO PEÑAS TO PUNTA DE LA ESTACA DE BARES, Avilés, line 1, Pta de la Forcada ⚓, amend: Pta de la Forcada ☆; 5M, amend: 17M.

935, LA CORUÑA, chartlet, insert legend "works (2009)" in SW basin at 43°21'7N 8°24-0W.

940, RÍA DE AROUSA, Chartlet, add: PHM bcn (⚓) with R lt flare at 42°36'-77N 8°50'-14W. Add: FI(3)R.10s.

AREA 24, PORTUGAL & THE AZORES

948, RIO DOURO/PORTO, N mole head FI R 3s 8.5m 3M, amend: FI R 5s 16m 9M; W twr, R stripes. Line 2, Old N Mole ☆, delete. Line 4, Cantareira Quay Oc ☆, delete.

952, PORTO (OPORTO), line 5, new N mole is lit by, FI R 3s 8-5m 3M, amend; FI R 5s 16m 9M (W twr, R stripes). Line 9, ...by Cantareira lt..., amend: ...at Cantareira...

956, LISBOA, chartlet, remove No 2 buoy at 38°37-37N 92°31-9W.

967, PONTA DELGADA, S1 and S2 Q(4) Y 10s, delete entry. Insert 3 new lts as follows:

Terminal pier E hd ⚓ FI(2)R 5s 3M; W twr, R bands; 37°44'-35N 25°39'-61W.

Terminal pier W hd ⚓ FI(3)G 15s 3M; W twr, G bands; 37°44'-24N 25°39'-83W.

Quebra floating bkwttr S end ⚓ Q(6)+LFI W 15s 3M; 2 ▼ (vert) on Bk bcn, Y top; 37°44'-26N 25°39'-97W.

970, PONTA DELGADA, *paste in new chartlet on page above*, showing new lights.

AREA 25, SOUTH WEST SPAIN, GIBRALTAR & MOROCCO

980, CÁDIZ, Chartlet, ☆ Oc.R.3s SE of Puerto America, delete. ☆ FI.G.6s SE of Puerto America, delete.

CORRECTIONS TO 2009 REEDS CHANNEL ALMANAC

AREA 1, SW ENGLAND

75, PORTLAND HARBOUR, Chartlet, delete light on Wellworthy Bcn (50°35'·3N 02°27'·8W).

AREA 2, CENTRAL S ENGLAND

114, RIVER HAMBLE, Chartlet, light, *Fl.G.4s*, close S of Solar Marine (approx 50°52'·37N 01°18'·5W), amend: *Q.G.*

Insert light, *Q.G.* (same symbol as above) at 50°52'·7N 01°17'·9W (E side of the river opposite *Q.R* light S of Swanwick Marina). Both bcns have tide gauges.

AREA 3, SE ENGLAND

130, SELSEY BILL and THE OWERS, lines 5/6, Owers, delete: *Whis*; substitute: *Bell*. Lat/long, amend: 50°38'·59N 00°41'·09W.

137, BRIGHTON, Facilities, Brighton Marina, (1300 + 200 visitors), amend: (1600 inc **Ø**); line 2, £6.50 for < 4 hrs, substitute: short stay prices on application; line 4, delete: *LPG*.

Chartlet, delete the waiting pontoon on the east side of the marina.

AREA 4, NORTH FRANCE

151, FÉCAMP, N Jetty ☆, delete from: *Horn(2) ... +2*;

158, DUNKERQUE, chartlet, ☆ on S side of Avant Port East (51°03.25'N 2°21.20'E), *Fl(3)15s*, amend: *Q*.

169, FÉCAMP, chartlet, ☆ *Fl(2)10s15m16M* (on N breakwater at entrance), delete: *Horn(2)30s*.

AREA 5, CENTRAL NORTH FRANCE

Ed Note: New AC 2029 (1:48:800) is an important replacement for AC 3674, that includes a 1:10,000 plan of St Brieuç Le Légué.

New AC 2028 (France North – Coast, Île de Bréhat to Plateau des Roches Douvres) will be a useful addition to coverage in the West of this area. It is based on French chart 7152 at 1:48,600.

Neither of these new charts are available in ARCS.

195, LE LÉGUÉ, lines 5-end;

1 bis, amend: 3;

2 bis, amend: 4;

2 ter, amend: 6;

3, amend: 5;

4, amend: 8;

5, amend: 7;

6, amend: 10;

7, amend: 9;

9, amend: 11;

10, amend: 14;

11, amend: 13.

200, PASSAGE INFORMATION, ST MALO TO L'OST PIC AND BEYOND, line 1, (AC 3674), amend: (AC 2028, 2029).

208, ERQUY, line 2, 3674, amend: 2029.

208, DAHOUE, Charts, 3674, amend: 2029.

208, LE LÉGUÉ, Charts, 3674, amend: 2029.

209, BINIC, Charts, 3674, amend: 2029.

209, LE LÉGUÉ, *paste in attached chartlets on page 4; shows new numbering of the approach buoyage.*

210, ST QUAY-PORTRIEUX, Charts, 3674, amend: 2029.

AREA 7, NORTH BRITTANY

Ed Note: New AC 2027 (1:48,700) is an important replacement for AC 3670.

New AC 2028 (France North – Coast, Île de Bréhat to Plateau des Roches Douvres) will be a useful addition to coverage in the East of this area. It is based on French chart 7152 at 1:48,600.

Neither of these new charts are available in ARCS.

242, PASSAGE INFORMATION, NORTH BRITTANY, line 1, (AC 2668, 2644, 2643), amend: (AC 2668, 2644, 2643, 2028).

243, PASSAGE INFORMATION, PAIMPOL TO PLOUMANAC'H, line 4, AC 3670, amend: AC 2027; add: 2028.

243, PASSAGE INFORMATION, LES SEPT ÎLES TO BAIE DE MORLIAX, line 1, AC 3670, amend: AC 2027.

243, LES SEPT ÎLES TO BAIE DE MORLIAX, line 1, (AC 3669), amend: (AC 2026).

243, ÎLE DE BATZ TO LE FOUR, 2nd para, line 4, (AC 3669, 3668), amend: (AC 2026, 2025).

244, PAIMPOL, Charts, 3670, amend: 2027; add: 2028.

244, ÎLE DE BRÉHAT, Charts, 3670, amend: 2027; add: 2028.

246, LÉZARDRIEUX, Charts, 3670, amend: 2027; add: 2028. Lower chartlet, add: *1₄* at 48°47'·329N 3°05'·970W. Add: *1 Wk* at 48°47'·456N 3°05'·636W.

247, TRÉGUIER, Charts, 3670, amend: 2027; add: 2028.

248, PORT BLANC, Charts, 3670, amend: 2027.

248, PERROS-GUIREC, Charts, 3670, amend: 2027.

249, PERROS-GUIREC, chartlet, Gommonénu PHM, add R light flare. *Ed Note: This was omitted from the April update.*

250, LES SEPT ÎLES, line 1, AC 3669, amend: AC 2026; line 2, 3670, amend: 2027.

250, PLOUMANAC'H, Charts, 3669, amend: 2026; 3670, amend: 2027.

250, TRÉGASTEL PLAG, line 2, 3669, amend: 2026; line 2, 3670, amend: 2027.

251, TRÉBUERDEN, Charts, 3669, amend: 2026.

252, LANNION (Léguer River), Charts, 3669, amend: 2026.

252, LOCQUÉMEAU, line 2, 3669, amend: 2026. **LOCQUIREC**, line 1, 3669, amend: 2026.

252, PRIMEL TRÉGASTEL, Charts, 3669, amend: 2026.

253, ROSCOFF, Charts, 3669, amend: 2026.

253, MORLAIX, Charts, 3669, amend: 2026.

254, ÎLE DE BATZ, line 2, AC 3668, amend; AC 2025.

254, MOGUÉRIEC, line 1, 3668, amend; 2025.

254, BRIGNOGAN, line 2, AC 3668, amend; AC 2025.

255, L'ABER WRAC'H, Charts, AC 3668, amend; AC 2025.

255, L'ABER BENOIT, Charts, AC 3668, amend; AC 2025.

255, L'ABERILDUT, Charts, AC 2644, amend; AC 2647.

CORRECTIONS TO 2009 REEDS EASTERN ALMANAC

AREA 1, E ENGLAND

31, BLACK DEEP, line 11, No. 3, lat/long, amend: 51°42'·41N 01°26'·48E.

41, RIVER MEDWAY, Main chartlet, delete Bn No5 on Nor Marsh (51°23'·8N 00°35'·8E); delete associated leading line, 096·5°.

70, RIVER ORE/ALDE, Navigation, lines 1/2, amend: WPT Orford Haven SWM buoy, 52°01'·62N 01°28'·00E, may be moved as required. For latest

Line 4, amend: Chartlet (next page) is based on surveys carried out in 2009, but

76, GREAT YARMOUTH, Chartlet, insert lights at entrance to Outer Harbour: Q.G at N entrance (52°34'·71N 01°44'·74E); Q.R at S entrance (52°34'·60N 01°44'·73E).

Ed Note: The new Outer Harbour is shown on the amended chartlet on Page 5 of the Apr Update.

AREA 2, NETHERLANDS & BELGIUM

83, APPROACHES TO HOEK VAN HOLLAND, line 8, Maas Center Q, amend: Maas Centre Q. 52°01'·11N 03°53'·44E, amend: 52°00'·92N 03°48'·79E. Add new line following: SB Q Fl(4)Y 10s; **Racon Z**; 51°59'·8N 3°54'·6E.

86, SPECIAL NOTES: NETHERLANDS, insert para before **Marinas: REGULATIONS** Discharge of toilet waste from recreational boats is forbidden in all Dutch waters, including inland waterways, lakes and the Waddenzee. *Ed Note: read more at www.vuilwater.info/files/folder_toilet_waste.pdf.*

106, HOEK VAN HOLLAND, chartlet, delete: WC Maersk WCM.

AREA 3, NE ENGLAND

130, KING'S LYNN AND WISBECH, RH chartlet, insert: Bn D, Fl.Y.10s, at Y Bn SSE of No 25 SHM buoy.

137, RIVER HUMBER, Chartlet. *Ed Note: Changing depths have been reported east of the Humber Bridge. Buoyage is frequently adjusted.*

141, HARTLEPOOL, Telephone, MRCC, amend: 01262 672317.

142, SEAHAM, Telephone, MRCC, amend: 01262 672317.

143, R TYNE/NORTH SHIELDS, Telephone, MRCC, amend: 01262 672317.

147, BLYTH, Telephone, MRCC, amend: 01262 672317.

150, HOLY ISLAND, Telephone, CG, amend: MRCC 01262 672317.

AREA 4, SE SCOTLAND

156, PORT SETON, COCKENZIE etc, line 7, Craigh Waugh, amend: L [IDM buoy] Fl (2) 10s (position unchanged).

157, KIRKCALDY and METHIL, line 3, Kirkcaldy Wreck, delete entry.

163, FORTH AND CLYDE CANAL, *Ed Note: The repairs at Lock 36 are now complete and the canal is open (Apr Update refers).*

AREA 5, NE SCOTLAND

190, INVERNESS, Facilities, line 3, 2.5m, amend: 3m.

193, WICK, Facilities, a new 70-berth marina is being developed in the Inner harbour; it should be available for the 2009 sailing season. More details when known.

CORRECTIONS TO 2009 REEDS WESTERN ALMANAC

AREA 1, NW SCOTLAND

32, OBAN TO LOCH CRAIGNISH, line 4, Bono Rock, amend: L Q (9) 15s; 56°16'·21N 05°41'·22W.

AREA 2, SW SCOTLAND

75, KAMES BAY, lines 3/4, amend: ... AB in marina, 55 inc V, £1.85/m, on S side of bay at Port Bannatyne.

Ed Note: This small marina is almost complete and should be fully operational within a few weeks.

AREA 3, NW ENGLAND

106, FLEETWOOD, Shelter, line 1, Fleetwood Village Marina, substitute: Fleetwood Haven Marina.

Navigation, delete entry, substitute:

NAVIGATION WPT 53°57'·67N 03°02'·05W, Fairway NCM buoy, Q, 134°/3ca to No 3 SHM buoy, VQ.G. Ideally arrive at WPT about HW-1½ if bound for the marina, 3M up river, which can be entered HW±2. Freeflow access through lock approx HW±1½ except some neap tides.

Beware ships entering/leaving harbour or swinging in vicinity of the river berths. A revolving Y light at the ro-ro berth indicates a large vessel is moving.

Nos 23 SHM and 24 PHM buoys mark start of Dock Channel, dredged to drying height of 3m. Call Fleetwood Dock Radio before entering channel (see R/T below).

R/T, line 2, amend: *Fleetwood Dock Radio*

Facilities, line 1, amend: **Fleetwood Haven Marina** 420 inc V (max 20m LOA) in two basins, ☎ 879062 ... ; add: BH (75 ton).

Chartlet, *substitute chartlet on page 3* showing a new light on Ferry Pier and an extension to the (renamed) Haven Marina.

AREA 4, S WALES AND BRISTOL CHANNEL

126, MILFORD HAVEN, RH column, penultimate line, ODAS. *Ed Note: There is now a second ODAS buoy approx 3ca SE of the one listed. Both buoys will be in place until trials are complete.*

144, CARDIFF, Facilities, add:

Cardiff Marina ☎ 343459, www.cardiffmarina.com, 320 inc 50 V welcome, £1.60, Wi-fi (free), D, ⚓, C (4·5 ton), 🚶 (short walk).

RH chartlet, LH edge, Cambrian Marina, substitute: Cardiff Marina.

AREA 6, N IRELAND

209, BELFAST LOUGH, Chartlet of Bangor, N Breakwater head, amend range of light (*Iso.R.12s*): 9M.

CORRECTIONS TO 2009 REEDS PBO SMALL CRAFT ALMANAC

CHAPTER 1, NAVIGATION

19, SELSEY BILL AND THE OWERS, lines 5/6, Owers, delete: *Whis*; substitute: *Bell*. Lat/long, amend: 50°38'·59N 00°41'·09W.

24, SOUTHSIDE TO LEITH/PORT EDGAR, line 7, Craigh Waugh, amend: L [IDM buoy] Fl (2) 10s (position unchanged).

38, BELFAST LOUGH/BANGOR, Bangor N Pier Hd, 14M, amend: 9M.

44, APPROACHES TO HOEK VAN HOLLAND, Add new line following MV: SB Q Fl(4)Y 10s; **Racon Z**; 51°59'·8N 3°54'·6E.

46, FÉCAMP, N Jetty ☆, delete from: *Horn(2) to: +2*;

61, PONTA DELGADA, insert 3 new lts as follows:

Terminal pier E hd ✕ Fl(2)R 5s 3M; W twr, R bands; 37°44'·35N 25°39'·61W.

Terminal pier W hd ✕ Fl(3)G 15s 3M; W twr, G bands; 37°44'·24N 25°39'·83W.

Quebra floating bkwtr S end ✕ Q(6)+LFI W 15s 3M; 2 ▼ (vert) on Bk bcn, Y top; 37°44'·26N 25°39'·97W.

CHAPTER 3, COMMUNICATIONS

107, RH column, line 1, Fleetwood, *Dock Radio*, substitute: *Fleetwood Dock Radio*.